

# PDZ-GEF1 Antibody

Rabbit Polyclonal

Antigen Affinity Purified

Protein ID NP\_055062.1

Catalog No. A301-966A

GeneID 9693

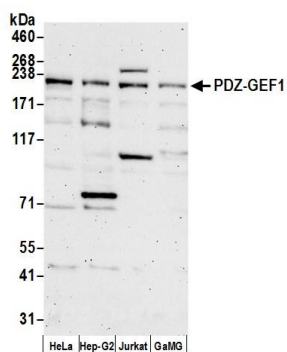
Lot No. A301-966A-4



<b>APPLICATIONS</b>	WB, IP, IHC						
<b>SPECIES REACTIVITY</b>	Human						
<b>PRESUMED REACTIVITY</b>	Based on 100% sequence identity, this antibody is predicted to react with Mouse and Dog						
<b>AMOUNT</b>	100 µl						
<b>CONCENTRATION</b>	1000 µg/ml						
<b>STORAGE/SHELF LIFE</b>	2 – 8° C / 1 year from date of receipt						
<b>PHYSICAL STATE</b>	Liquid						
<b>BUFFER</b>	Tris-citrate/phosphate buffer, pH 7 to 8 containing 0.09% Sodium Azide						
<b>ISOTYPE</b>	IgG						
<b>ORIGIN</b>	USA						
<b>PRODUCTION PROCEDURES</b>	<p>Antibody was affinity purified using an epitope specific to PDZ-GEF1 immobilized on solid support.</p> <p>The epitope recognized by A301-966A maps to a region between residue 975 and 1025 of human PDZ domain containing guanine nucleotide exchange factor (GEF) 1 using the numbering given in entry NP_055062.1 (GeneID 9693).</p> <p>Immunoglobulin concentration was determined by extinction coefficient: absorbance at 280 nm of 1.4 equals 1.0 mg of IgG.</p>						
<b>APPLICATIONS</b>	<p>Centrifuge tube to remove product from lid. Optimal working dilutions should be determined experimentally by the investigator. Prepare working dilution immediately before use.</p> <table><tr><td>Western Blot</td><td>1:1,000 – 1:5,000</td></tr><tr><td>Immunoprecipitation</td><td>2 – 10 µg/mg lysate</td></tr><tr><td>Immunohistochemistry</td><td>1:1,000 to 1:5,000. Epitope retrieval with Tris-EDTA pH9.0 is recommended for FFPE tissue sections.</td></tr></table>	Western Blot	1:1,000 – 1:5,000	Immunoprecipitation	2 – 10 µg/mg lysate	Immunohistochemistry	1:1,000 to 1:5,000. Epitope retrieval with Tris-EDTA pH9.0 is recommended for FFPE tissue sections.
Western Blot	1:1,000 – 1:5,000						
Immunoprecipitation	2 – 10 µg/mg lysate						
Immunohistochemistry	1:1,000 to 1:5,000. Epitope retrieval with Tris-EDTA pH9.0 is recommended for FFPE tissue sections.						
<b>APPLICATION NOTES</b>	Western blot of lysates performed using standard western blot reagents and 4–8% SDS-PAGE.						
<b>IHC HUMAN CONTROLS</b>	Breast Carcinoma, Colon Carcinoma, Ovarian Carcinoma						
<b>ADDITIONAL INFO</b>	<p><a href="https://www.bethyl.com/product/A301-966A">https://www.bethyl.com/product/A301-966A</a></p> <p>Use the link above to view SDS, a current list of citations, and other product specific information.</p>						

This document certifies that this product has met all of the quality control standards defined by Bethyl Laboratories, Inc.  
Eric McIntush, PhD | Chief Scientific Officer

Date: June 21, 2019

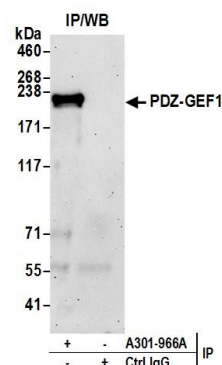


#### Detection of human PDZ-GEF1 by western blot.

**Samples:** Whole cell lysate (50 µg) from HeLa, Hep-G2, Jurkat, and GaMG cells prepared using NETN lysis buffer.

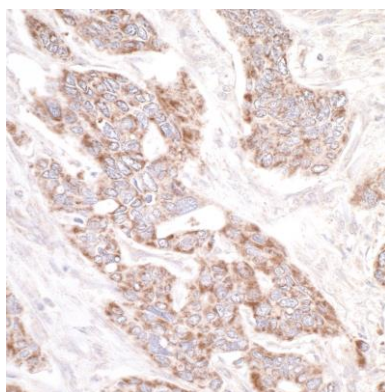
**Antibody:** Affinity purified rabbit anti-PDZ-GEF1 antibody A301-966A (lot A301-966A-4) used for WB at 0.4 µg/ml.

**Detection:** Chemiluminescence with an exposure time of 3 minutes.



#### Detection of human PDZ-GEF1 by western blot of immunoprecipitates.

**Samples:** Whole cell lysate (1.0 mg per IP reaction; 20% of IP loaded) from HeLa cells prepared using NETN lysis buffer. **Antibodies:** Affinity purified rabbit anti-PDZ-GEF1 antibody A301-966A (lot A301-966A-4) used for IP at 6 µg per reaction. For blotting immunoprecipitated PDZ-GEF1, A301-966A was used at 0.4 µg/ml. **Detection:** Chemiluminescence with an exposure time of 3 minutes.



#### Detection of human PDZ-GEF1 by immunohistochemistry.

**Sample:** FFPE section of human ovarian carcinoma.

**Antibody:** Affinity purified rabbit anti-PDZ-GEF1 (Cat. No. A301-966A lot 4) used at a dilution of 1:5,000 (0.2 µg/ml).

**Detection:** DAB