

LARG Antibody

Rabbit Polyclonal

Antigen Affinity Purified

Protein ID NP_056128.1

Catalog No. A301-959A

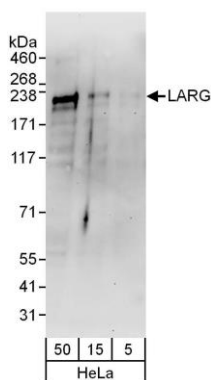
GeneID 23365

Lot No. A301-959A-2



APPLICATIONS	WB
SPECIES REACTIVITY	Human
AMOUNT	100 µl
CONCENTRATION	1000 µg/ml
STORAGE/SHELF LIFE	2 – 8° C / 1 year from date of receipt
PHYSICAL STATE	Liquid
BUFFER	Tris-citrate/phosphate buffer, pH 7 to 8 containing 0.09% Sodium Azide
ISOTYPE	IgG
ORIGIN	USA
PRODUCTION PROCEDURES	<p>Antibody was affinity purified using an epitope specific to LARG immobilized on solid support.</p> <p>The epitope recognized by A301-959A maps to a region between residue 1350 and 1400 of human leukemia-associated rho guanine nucleotide exchange factor using the numbering given in entry NP_056128.1 (GeneID 23365).</p> <p>Immunoglobulin concentration was determined by extinction coefficient: absorbance at 280 nm of 1.4 equals 1.0 mg of IgG.</p>
APPLICATIONS	<p>Centrifuge tube to remove product from lid. Optimal working dilutions should be determined experimentally by the investigator. Prepare working dilution immediately before use.</p> <p>Western Blot 1:2,000 – 1:10,000</p> <p>Immunoprecipitation Not recommended. Use rabbit anti-LARG antibody A301-960A.</p>
APPLICATION NOTES	Western blot of lysates performed using standard western blot reagents and 4-8% SDS-PAGE.
ADDITIONAL INFO	<p>https://www.bethyl.com/product/A301-959A</p> <p>Use the link above to view SDS, a current list of citations, and other product specific information.</p>

This document certifies that this product has met all of the quality control standards defined by Bethyl Laboratories, Inc.
Eric McIntush, PhD | Chief Scientific Officer Date: June 21, 2019

**Detection of human LARG by western blot. *Samples:***

Whole cell lysate (5, 15 and 50 μ g) from HeLa cells.

Antibodies: Affinity purified rabbit anti-LARG antibody

A301-959A (lot A301-959A-2) used for WB at 0.4 μ g/ml.

Detection: Chemiluminescence with an exposure time of 3 minutes.