

CENP-E Antibody

Rabbit Polyclonal

Antigen Affinity Purified	RefSeq ID	NP_001804.2
Catalog No. A301-943A	Uniprot ID	Q02224
Lot No. A301-943A-2	GeneID	1062

APPLICATIONS	IP
SPECIES REACTIVITY	Human
AMOUNT	100 µl
CONCENTRATION	1000 µg/ml
STORAGE/SHELF LIFE	2 – 8°C / 1 year from date of receipt
PHYSICAL STATE	Liquid
BUFFER	Tris-citrate/phosphate buffer, pH 7 to 8 containing 0.09% Sodium Azide
ISOTYPE	IgG
ORIGIN	USA
PRODUCTION PROCEDURES	Antibody was affinity purified using an epitope specific to CENP-E immobilized on solid support.

The epitope recognized by A301-943A maps to a region between residue 2500 and 2550 of human centromere protein E using the numbering given in entry NP_001804.2 (GeneID 1062).

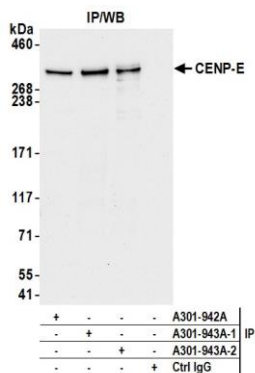
Immunoglobulin concentration was determined by extinction coefficient: absorbance at 280 nm of 1.4 equals 1.0 mg of IgG.

APPLICATIONS Centrifuge tube to remove product from lid. Optimal working dilutions should be determined experimentally by the investigator. Prepare working dilution immediately before use.

Immunoprecipitation 2 – 10 µg/mg lysate

ADDITIONAL INFO <https://www.fortislife.com/p/A301-943A>
Use the link above to view SDS, a current list of citations, and other product specific information.

This document certifies that this product has met all of the quality control standards defined by Bethyl Laboratories, Inc.
Michael Spencer, PhD Date: February 7, 2023



Detection of human CENP-E by western blot of immunoprecipitates. *Samples:* Whole cell lysate (1.0 mg per IP reaction; 10% of IP loaded) from HEK293T cells prepared using NETN lysis buffer. *Antibodies:* Affinity purified rabbit anti-CENP-E antibody (A301-943A lot 2) used for IP at 6 μ g per reaction. CENP-E was also immunoprecipitated by a previous lot of this antibody (A301-943A lot 1) and a second antibody against a different epitope of CENP-E (A301-942A). For blotting immunoprecipitated CENP-E, A301-943A was used at 1 μ g/ml. *Detection:* Chemiluminescence with an exposure time of 10 seconds.