

SSB1 Antibody

Rabbit Polyclonal

Antigen Affinity Purified Protein ID NP_076973.1

Catalog No. A301-938A-T GeneID 79035

Lot No. A301-938A-T-1



| | |
|------------------------------|--|
| APPLICATIONS | WB, IP, IHC |
| SPECIES REACTIVITY | Human, Mouse |
| PRESUMED REACTIVITY | Based on 100% sequence identity, this antibody is predicted to react with Rat and Bovine |
| AMOUNT | 20 µl (2 blots) |
| CONCENTRATION | 400 µg/ml |
| STORAGE/SHELF LIFE | 2 - 8° C / 1 year from date of receipt |
| PHYSICAL STATE | Liquid |
| BUFFER | Tris-buffered Saline containing 0.1% BSA and 0.09% Sodium Azide |
| ISOTYPE | IgG |
| ORIGIN | USA |
| PRODUCTION PROCEDURES | Antibody was affinity purified using an epitope specific to SSB1 immobilized on solid support. |

The epitope recognized by A301-938A-T maps to a region between residue 161 and 211 of human single-stranded DNA-binding protein 1 using the numbering given in entry NP_076973.1 (GeneID 79035).

APPLICATIONS Centrifuge tube to remove product from lid. Optimal working dilutions should be determined experimentally by the investigator. Prepare working dilution immediately before use.

Western Blot 1:1000

Immunoprecipitation The antibody contained within A301-938A-T has been qualified for use in immunoprecipitation; however, we recommend using the alternative formulation of this antibody found as product A301-938A.

Immunohistochemistry 1:400 - 1:2,000. Epitope retrieval with Tris-EDTA pH 9.0 is recommended for human tissues. Epitope retrieval with citrate buffer pH 6.0 is recommended for mouse tissues.

APPLICATION NOTES Western blot of immunoprecipitates performed using Normal Pig Serum (Cat. No. S100-020), Goat anti-Rabbit Light Chain HRP Conjugate (Cat. No. A120-113P) and 4-20% SDS-PAGE (link to IP-western blot protocol in Additional Info section below).

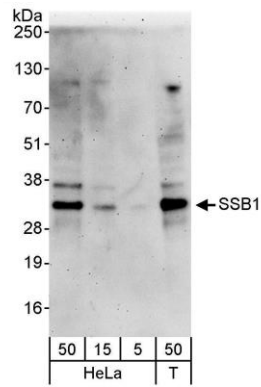
Western blot of lysates performed using standard western blot reagents and 4-20% SDS-PAGE.

ADDITIONAL INFO <https://www.bethyl.com/product/A301-938A-T>

Use the link above to view SDS, a current list of citations, and other product specific information.

IP-western blot protocol: https://www.bethyl.com/content/protocol_IP_WB

This document certifies that this product has met all of the quality control standards defined by Bethyl Laboratories, Inc.
Eric McIntush, PhD | Chief Scientific Officer Date: June 21, 2019



Detection of human SSB1 by western blot. *Samples:* Whole cell lysate from HeLa (5, 15, and 50 µg) and HEK293T (T; 50 µg) cells. *Antibody:* Affinity purified rabbit anti-SSB1 antibody A301-938A-T used at 1:1000. *Detection:* Chemiluminescence with an exposure time of 3 minutes.