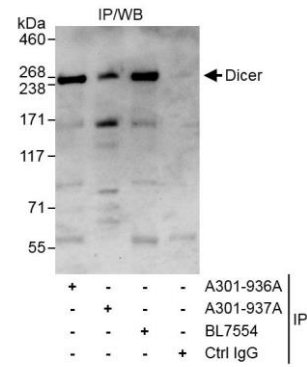


**Detection of human Dicer by western blot.** *Samples:* Whole cell lysate from HEK293T (5, 15, and 50 µg) and HeLa (H; 50 µg) cells. *Antibody:* Affinity purified rabbit anti-Dicer antibody A301-937A (lot A301-937A-1) used at 0.1 µg/ml. *Detection:* Chemiluminescence with an exposure time of 3 minutes.



**Detection of human Dicer by western blot of immunoprecipitates.** *Samples:* Whole cell lysate (1 mg for IP, 20% of IP loaded) from HEK293T cells. *Antibodies:* Affinity purified rabbit anti-Dicer antibody A301-937A (lot A301-937A-1) used for IP at 10 µg/mg lysate. Dicer was also immunoprecipitated by rabbit anti-Dicer antibodies A301-936A and BL7554, which recognize other epitopes. For blotting immunoprecipitated Dicer, A301-937A was used at 1.0 µg/ml. *Detection:* Chemiluminescence with exposure time of 30 seconds.