

ZBTB40 Antibody

Rabbit Polyclonal

Antigen Affinity Purified

Protein ID NP_055685.3

Catalog No. A301-932A

GeneID 9923

Lot No. A301-932A-1



APPLICATIONS	WB, IP, IHC
SPECIES REACTIVITY	Human
AMOUNT	100 µl
CONCENTRATION	1000 µg/ml
STORAGE/SHELF LIFE	2 - 8° C / 1 year from date of receipt
PHYSICAL STATE	Liquid
BUFFER	Tris-citrate/phosphate buffer, pH 7 to 8 containing 0.09% Sodium Azide
ISOTYPE	IgG
ORIGIN	USA
PRODUCTION PROCEDURES	Antibody was affinity purified using an epitope specific to ZBTB40 immobilized on solid support.

The epitope recognized by A301-932A maps to a region between residue 1140 and 1190 of human zinc finger and BTB domain containing 40 using the numbering given in entry NP_055685.3 (GeneID 9923).

Immunoglobulin concentration was determined by extinction coefficient: absorbance at 280 nm of 1.4 equals 1.0 mg of IgG.

APPLICATIONS Centrifuge tube to remove product from lid. Optimal working dilutions should be determined experimentally by the investigator. Prepare working dilution immediately before use.

Western Blot 1:2,000 - 1:10,000

Immunoprecipitation 2 - 5 µg/mg lysate

Immunohistochemistry 1:1,000 - 1:5,000. Epitope retrieval with citrate buffer pH 6.0 is recommended for FFPE tissue sections.

APPLICATION NOTES Western blot of immunoprecipitates performed using Normal Pig Serum (Cat. No. S100-020), Goat anti-Rabbit Light Chain HRP Conjugate (Cat. No. A120-113P) and 4-8% SDS-PAGE (link to IP-western blot protocol in Additional Info section below).

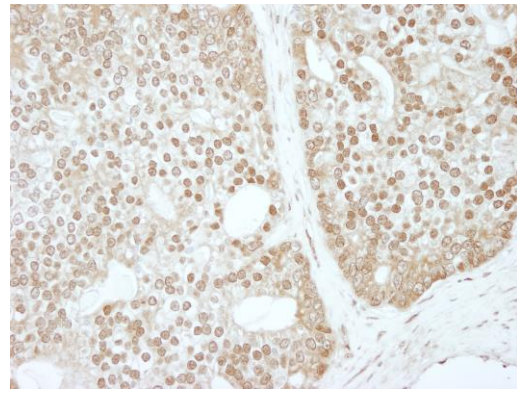
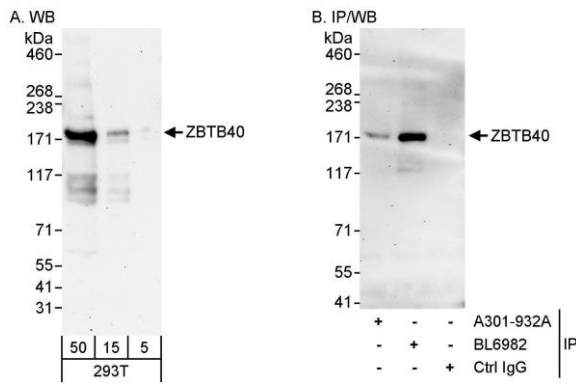
IHC HUMAN CONTROLS Western blot of lysates performed using standard western blot reagents and 4-8% SDS-PAGE. Breast Carcinoma, Colon Carcinoma, Prostate Carcinoma

ADDITIONAL INFO <https://www.bethyl.com/product/A301-932A>

Use the link above to view SDS, a current list of citations, and other product specific information.

IP-western blot protocol: https://www.bethyl.com/content/protocol_IP_WB

This document certifies that this product has met all of the quality control standards defined by Bethyl Laboratories, Inc.
Eric McIntush, PhD | Chief Scientific Officer Date: June 21, 2019



Detection of human ZBTB40 by western blot and immunoprecipitation. *Samples:* Whole cell lysate from HEK293T (5, 15 and 50 µg for WB) and HeLa (1 mg for IP, 20% of IP loaded) cells. *Antibodies:* Affinity purified rabbit anti-ZBTB40 antibody A301-932A used for WB at 0.1 µg/ml (A) and 1 µg/ml (B) and used for IP at 3 µg/mg lysate. ZBTB40 was also immunoprecipitated by rabbit anti-ZBTB40 antibody BL6982, which recognizes an upstream epitope. *Detection:* Chemiluminescence with exposure times of 3 minutes (A and B).

Detection of human ZBTB40 by immunohistochemistry. *Sample:* FFPE section of human prostate carcinoma. *Antibody:* Affinity purified rabbit anti-ZBTB40 (Cat. No. A301-932A Lot1) used at a dilution of 1:1,000 (1 µg/ml). *Detection:* DAB