

HERC2 Antibody

Rabbit Polyclonal

Antigen Affinity Purified

Protein ID NP_004658.3

Catalog No. A301-905A

GeneID 8924

Lot No. A301-905A-2



APPLICATIONS	WB, IP
SPECIES REACTIVITY	Human, Mouse
AMOUNT	100 µl
CONCENTRATION	1000 µg/ml
STORAGE/SHELF LIFE	2 - 8° C / 1 year from date of receipt
PHYSICAL STATE	Liquid
BUFFER	Tris-citrate/phosphate buffer, pH 7 to 8 containing 0.09% Sodium Azide
ISOTYPE	IgG
ORIGIN	USA
PRODUCTION PROCEDURES	Antibody was affinity purified using an epitope specific to HERC2 immobilized on solid support.

The epitope recognized by A301-905A maps to a region between residue 4784 and 4834 of human hect domain and RLD 2 using the numbering given in entry NP_004658.3 (GeneID 8924).

Immunoglobulin concentration was determined by extinction coefficient: absorbance at 280 nm of 1.4 equals 1.0 mg of IgG.

APPLICATIONS Centrifuge tube to remove product from lid. Optimal working dilutions should be determined experimentally by the investigator. Prepare working dilution immediately before use.

Western Blot 1:2,000 - 1:10,000

Immunoprecipitation 2 - 5 µg/mg lysate

APPLICATION NOTES Western blot of immunoprecipitates performed using Normal Pig Serum (Cat. No. S100-020), Goat anti-Rabbit Light Chain HRP Conjugate (Cat. No. A120-113P) and 3-8% SDS-PAGE (link to IP-western blot protocol in Additional Info section below).

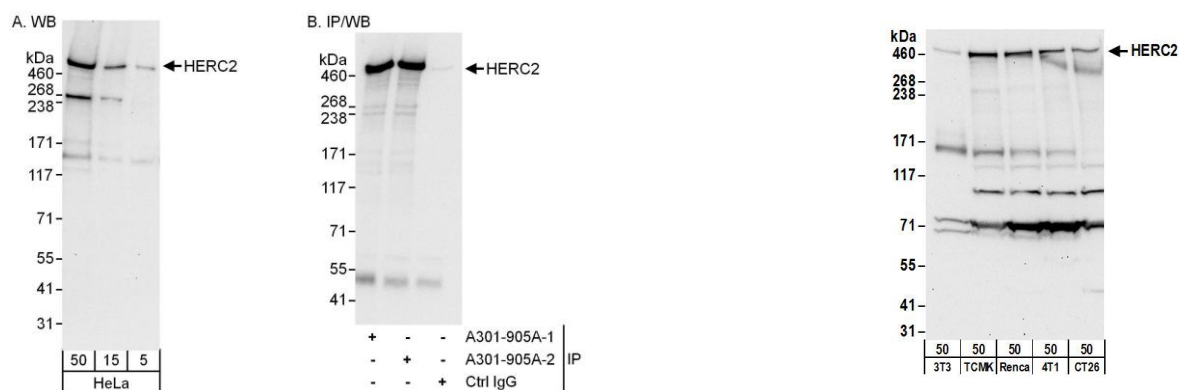
Western blot of lysates performed using standard western blot reagents and 3-8% SDS-PAGE.

ADDITIONAL INFO <https://www.bethyl.com/product/A301-905A>

Use the link above to view SDS, a current list of citations, and other product specific information.

IP-western blot protocol: https://www.bethyl.com/content/protocol_IP_WB

This document certifies that this product has met all of the quality control standards defined by Bethyl Laboratories, Inc.
Eric McIntush, PhD | Chief Scientific Officer Date: June 21, 2019



Detection of human HERC2 by western blot and immunoprecipitation. *Samples:* Whole cell lysate (5, 15 and 50 µg for WB; 1 mg for IP, 20% of IP loaded) from HeLa cells. *Antibodies:* Affinity purified rabbit anti-HERC2 antibody A301-905A (lot A301-905A-2) used for WB at 0.1 µg/ml (A) and 1 µg/ml (B) and used for IP at 3 µg/mg lysate. HERC2 was also immunoprecipitated by a previous lot (lot A301-905A-1) of this antibody. *Detection:* Chemiluminescence with exposure times of 30 seconds (A) and 3 seconds (B).

Detection of mouse HERC2 by western blot. *Samples:* Whole cell lysate (50 µg) from NIH 3T3, TCMK-1, Renca, 4T1, and CT26.WT cells. *Antibodies:* Affinity purified rabbit anti-HERC2 antibody A301-905A (lot A301-905A-2) used for WB at 0.5 µg/ml. *Detection:* Chemiluminescence with an exposure time of 30 seconds.