

HERC1 Antibody

Rabbit Polyclonal

Antigen Affinity Purified

Protein ID NP_003913.3

Catalog No. A301-904A

GeneID 8925

Lot No. A301-904A-2



APPLICATIONS	WB, IP
SPECIES REACTIVITY	Human
AMOUNT	100 µl
CONCENTRATION	1000 µg/ml
STORAGE/SHELF LIFE	2 – 8° C / 1 year from date of receipt
PHYSICAL STATE	Liquid
BUFFER	Tris-citrate/phosphate buffer, pH 7 to 8 containing 0.09% Sodium Azide
ISOTYPE	IgG
ORIGIN	USA
PRODUCTION PROCEDURES	Antibody was affinity purified using an epitope specific to HERC1 immobilized on solid support.

The epitope recognized by A301-904A maps to a region between residue 2400 and 2450 of human hect (homologous to the E6-AP (UBE3A) carboxyl terminus) domain and RCC1 (CHC1)-like domain (RLD) 1 using the numbering given in entry NP_003913.3 (GeneID 8925).

Immunoglobulin concentration was determined by extinction coefficient: absorbance at 280 nm of 1.4 equals 1.0 mg of IgG.

APPLICATIONS Centrifuge tube to remove product from lid. Optimal working dilutions should be determined experimentally by the investigator. Prepare working dilution immediately before use.

Western Blot 1:2000 – 1:10,000

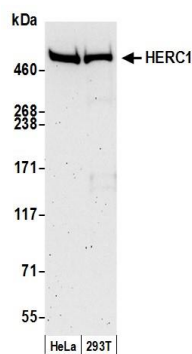
Immunoprecipitation 2 – 10 µg/mg lysate

APPLICATION NOTES Western blot of immunoprecipitates performed using Normal Pig Serum (Cat. No. S100-020), Goat anti-Rabbit Light Chain HRP Conjugate (Cat. No. A120-113P) and 3-8% SDS-PAGE (link to IP-western blot protocol in Additional Info section below).

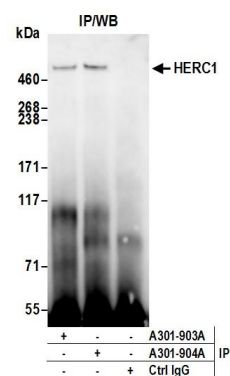
ADDITIONAL INFO <https://www.bethyl.com/product/A301-904A>

Use the link above to view SDS, a current list of citations, and other product specific information. IP-western blot protocol: https://www.bethyl.com/content/protocol_IP_WB

This document certifies that this product has met all of the quality control standards defined by Bethyl Laboratories, Inc.
Eric McIntush, PhD | Chief Scientific Officer Date: June 21, 2019



Detection of human HERC1 by western blot. *Samples:* Whole cell lysate (50 μ g) from HeLa and HEK293T cells prepared using NETN lysis buffer. *Antibody:* Affinity purified rabbit anti-HERC1 antibody A301-904A (lot A301-904A-2) used for WB at 0.1 μ g/ml. *Detection:* Chemiluminescence with an exposure time of 3 minutes.



Detection of human HERC1 by western blot of immunoprecipitates. *Samples:* Whole cell lysate (1.0 mg per IP reaction; 20% of IP loaded) from HeLa, cells prepared using NETN lysis buffer. *Antibodies:* Affinity purified rabbit anti-HERC1 antibody A301-904A (lot A301-904A-2) used for IP at 3 μ g per reaction. HERC1 was also immunoprecipitated by rabbit anti-HERC1 antibody A301-903A. For blotting immunoprecipitated HERC1, A301-904A was used at 1 μ g/ml. *Detection:* Chemiluminescence with an exposure time of 75 seconds.