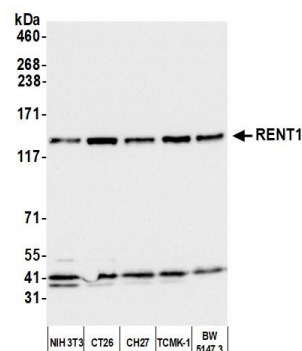
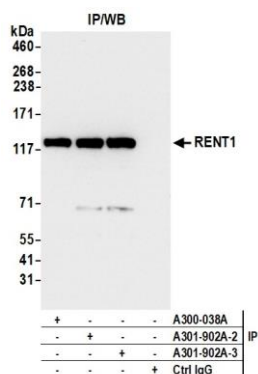


**Detection of human RENT1 by western blot.** *Samples:* Whole cell lysate (50 µg) from K-562, HEK293T, MCF-7, Jurkat, and HeLa cells prepared using NETN lysis buffer. *Antibody:* Affinity purified rabbit anti-RENT1 antibody (A301-902A lot 3) used for WB at 0.04 µg/ml. *Detection:* Chemiluminescence with an exposure time of 10 seconds.



**Detection of mouse RENT1 by western blot.** *Samples:* Whole cell lysate (50 µg) from NIH 3T3, CT26, CH27, TCMK-1, and BW5147.3 cells prepared using NETN lysis buffer. *Antibody:* Affinity purified rabbit anti-RENT1 antibody (A301-902A lot 3) used for WB at 0.04 µg/ml. *Detection:* Chemiluminescence with an exposure time of 3 seconds.



**Detection of human RENT1 by western blot of immunoprecipitates.** *Samples:* Whole cell lysate (1.0 mg per IP reaction; 10% of IP loaded) from HEK293T cells prepared using NETN lysis buffer. *Antibodies:* Affinity purified rabbit anti-RENT1 antibody (A301-902A lot 3) used for IP at 4 µg per reaction. RENT1 was also immunoprecipitated by a previous lot of this antibody (A301-902A lot 2) and a second antibody against a different epitope of RENT1 (A300-038A). For blotting immunoprecipitated RENT1, A301-902A was used at 0.04 µg/ml. *Detection:* Chemiluminescence with an exposure time of 3 seconds.