

# EEA1 Antibody

Rabbit Polyclonal

Antigen Affinity Purified

Protein ID NP\_003557.2

Catalog No. A301-897A

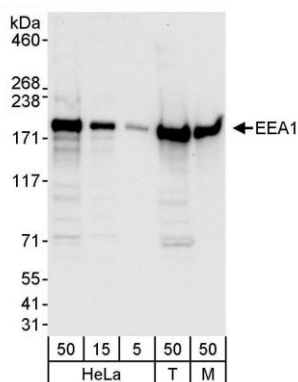
GeneID 8411

Lot No. A301-897A-1

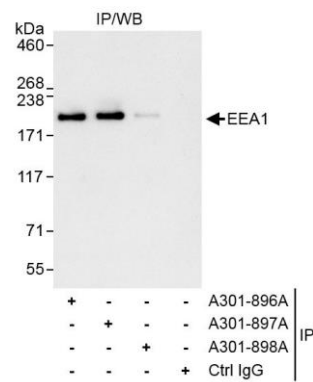


<b>APPLICATIONS</b>	WB, IP
<b>SPECIES REACTIVITY</b>	Human, Mouse
<b>AMOUNT</b>	100 µl
<b>CONCENTRATION</b>	200 µg/ml
<b>STORAGE/SHELF LIFE</b>	2 – 8° C / 1 year from date of receipt
<b>PHYSICAL STATE</b>	Liquid
<b>BUFFER</b>	Tris-buffered Saline containing 0.1% BSA and 0.09% Sodium Azide
<b>ISOTYPE</b>	IgG
<b>ORIGIN</b>	USA
<b>PRODUCTION PROCEDURES</b>	Antibody was affinity purified using an epitope specific to EEA1 immobilized on solid support.  The epitope recognized by A301-897A maps to a region between residue 175 and 225 of human early endosome antigen 1 using the numbering given in entry NP_003557.2 (GeneID 8411).  Immunoglobulin concentration was determined by extinction coefficient: absorbance at 280 nm of 1.4 equals 1.0 mg of IgG.
<b>APPLICATIONS</b>	Centrifuge tube to remove product from lid. Optimal working dilutions should be determined experimentally by the investigator. Prepare working dilution immediately before use.  Western Blot 1:2,000 – 1:10,000  Immunoprecipitation 2 – 5 µg/mg lysate
<b>APPLICATION NOTES</b>	Western blot of immunoprecipitates performed using Normal Pig Serum (Cat. No. S100-020), Goat anti-Rabbit Light Chain HRP Conjugate (Cat. No. A120-113P) and 4-8% SDS-PAGE (link to IP-western blot protocol in Additional Info section below).  Western blot of lysates performed using standard western blot reagents and 4-8% SDS-PAGE.
<b>IHC HUMAN CONTROLS</b>	Breast Carcinoma, Ovarian Carcinoma
<b>ADDITIONAL INFO</b>	<a href="https://www.bethyl.com/product/A301-897A">https://www.bethyl.com/product/A301-897A</a> Use the link above to view SDS, a current list of citations, and other product specific information. IP-western blot protocol <a href="https://www.bethyl.com/content/protocol_IP_WB">https://www.bethyl.com/content/protocol_IP_WB</a>

This document certifies that this product has met all of the quality control standards defined by Bethyl Laboratories, Inc.  
Eric McIntush, PhD | Chief Scientific Officer Date: November 12, 2019



**Detection of human and mouse EEA1 by western blot.**  
*Samples:* Whole cell lysate from HeLa (5, 15, and 50 µg), HEK293T (T; 50 µg), and mouse NIH 3T3 (M; 50 µg) cells.  
*Antibody:* Affinity purified rabbit anti-EEA1 antibody A301-897A- (lot A301-897A-1) used at 0.04 µg/ml.  
*Detection:* Chemiluminescence with an exposure time of 10 seconds.



**Detection of human EEA1 by western blot of immunoprecipitates.** *Samples:* Whole cell lysate (1 mg for IP, 20% of IP loaded) from HeLa cells. *Antibodies:* Affinity purified rabbit anti-EEA1 antibody A301-897A (lot A301-897A-1) used for IP at 3 µg/mg lysate. EEA1 was also immunoprecipitated by rabbit anti-EEA1 antibodies A301-896A and A301-898A, which recognize other epitopes. For blotting immunoprecipitated EEA1, A301-897A was used at 1.0 µg/ml. *Detection:* Chemiluminescence with exposure time of 3 seconds.