

EEA1 Antibody

Rabbit Polyclonal

Antigen Affinity Purified

Protein ID NP_003557.2

Catalog No. A301-896A

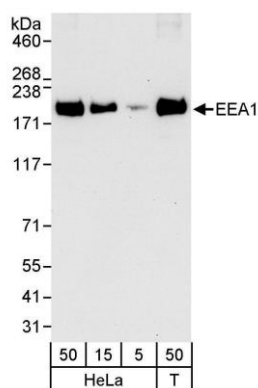
GeneID 8411

Lot No. A301-896A-1

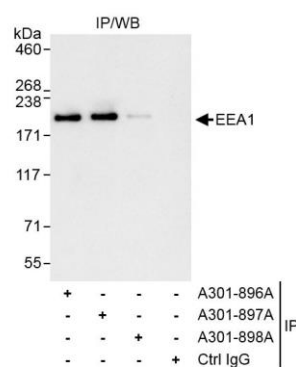


APPLICATIONS	WB, IP, IHC
SPECIES REACTIVITY	Human
AMOUNT	100 µl
CONCENTRATION	200 µg/ml
STORAGE/SHELF LIFE	2 – 8° C / 1 year from date of receipt
PHYSICAL STATE	Liquid
BUFFER	Tris-buffered Saline containing 0.1% BSA and 0.09% Sodium Azide
ISOTYPE	IgG
ORIGIN	USA
PRODUCTION PROCEDURES	<p>Antibody was affinity purified using an epitope specific to EEA1 immobilized on solid support.</p> <p>The epitope recognized by A301-896A maps to a region between residue 100 and 150 of human early endosome antigen 1 using the numbering given in entry NP_003557.2 (GeneID 8411).</p> <p>Immunoglobulin concentration was determined by extinction coefficient: absorbance at 280 nm of 1.4 equals 1.0 mg of IgG.</p>
APPLICATIONS	<p>Centrifuge tube to remove product from lid. Optimal working dilutions should be determined experimentally by the investigator. Prepare working dilution immediately before use.</p> <p>Western Blot 1:2,000 – 1:10,000</p> <p>Immunoprecipitation 2 – 5 µg/mg lysate</p> <p>Immunohistochemistry 1:200 – 1:2,000. Epitope retrieval with citrate buffer pH 6.0 is recommended for FFPE tissue sections.</p>
APPLICATION NOTES	<p>Western blot of immunoprecipitates performed using Normal Pig Serum (Cat. No. S100-020), Goat anti-Rabbit Light Chain HRP Conjugate (Cat. No. A120-113P) and 4-8% SDS-PAGE (link to IP-western blot protocol in Additional Info section below).</p> <p>Western blot of lysates performed using standard western blot reagents and 4-8% SDS-PAGE.</p>
IHC HUMAN CONTROLS	Breast Carcinoma, Colon Carcinoma, Ovarian Carcinoma
ADDITIONAL INFO	<p>https://www.bethyl.com/product/A301-896A</p> <p>Use the link above to view SDS, a current list of citations, and other product specific information.</p> <p>IP-western blot protocol https://www.bethyl.com/content/protocol_IP_WB</p>

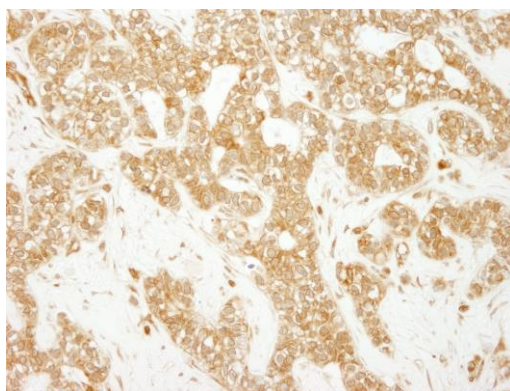
This document certifies that this product has met all of the quality control standards defined by Bethyl Laboratories, Inc.
Eric McIntush, PhD | Chief Scientific Officer Date: November 12, 2019



Detection of human EEA1 by western blot. *Samples:* Whole cell lysate from HeLa (5, 15, and 50 μ g) and HEK293T (T; 50 μ g) cells. *Antibody:* Affinity purified rabbit anti-EEA1 antibody A301-896A (lot A301-896A-1) used at 0.04 μ g/ml. *Detection:* Chemiluminescence with an exposure time of 30 seconds.



Detection of human EEA1 by western blot of immunoprecipitates. *Samples:* Whole cell lysate (1 mg for IP, 20% of IP loaded) from HeLa cells. *Antibodies:* Affinity purified rabbit anti-EEA1 antibody A301-896A (lot A301-896A-1) used for IP at 3 μ g/mg lysate. EEA1 was also immunoprecipitated by rabbit anti-EEA1 antibodies A301-897A and A301-898A, which recognize downstream epitopes. For blotting immunoprecipitated EEA1, A301-896A was used at 1.0 μ g/ml. *Detection:* Chemiluminescence with exposure time of 30 seconds.



Detection of human EEA1 by immunohistochemistry.
Sample: FFPE section of human breast carcinoma.
Antibody: Affinity purified rabbit anti-EEA1 (Cat. No. A301-896A) used at a dilution of 1:200 (1 μ g/ml).
Detection: DAB