

Notch1 Antibody

Rabbit Polyclonal

Antigen Affinity Purified

Catalog No. A301-894A

Lot No. A301-894A-2

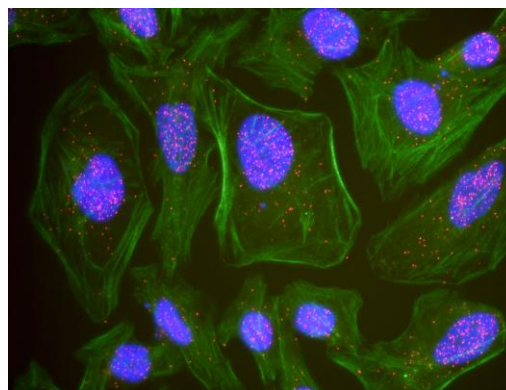
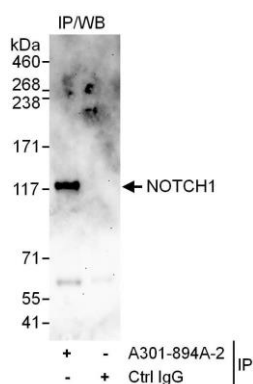
Protein ID NP_060087.3

GeneID 4851



APPLICATIONS	IP, PLA
SPECIES REACTIVITY	Human
PRESUMED REACTIVITY	Based on 100% sequence identity, this antibody is predicted to react with Mouse, Rat, Gorilla, Chimpanzee and White-tufted-ear marmoset
ISOTYPE	IgG
AMOUNT	100 µl at 1 mg/ml
STORAGE/SHELF LIFE	2 – 8° C / 1 year from date of receipt
PHYSICAL STATE	Liquid
BUFFER	Tris-citrate/phosphate buffer, pH 7 to 8 containing 0.09% Sodium Azide
ORIGIN	USA
PRODUCTION PROCEDURES	Antibody was affinity purified using an epitope specific to Notch1 immobilized on solid support. The epitope recognized by A301-894A maps to a region between residue 2400 and 2450 of human Notch ortholog 1, translocation-associated using the numbering given in entry NP_060087.3 (GeneID 4851). Immunoglobulin concentration was determined by extinction coefficient: absorbance at 280 nm of 1.4 equals 1.0 mg of IgG.
APPLICATIONS	Centrifuge tube to remove product from lid. Optimal working dilutions should be determined experimentally by the investigator. Prepare working dilution immediately before use. Western Blot Not recommended. Use A301-895A. Immunoprecipitation 2 to 5 µg/mg lysate Proximity Ligation Assay 1:1,000 – 1:20,000
APPLICATION NOTES	Western blot of immunoprecipitates performed using ReliaBLOT® Reagents (Cat. No. WB120) and 4-8% SDS-PAGE.
ADDITIONAL INFO	http://www.bethyl.com/product/A301-894A Use the link above to view SDS, a current list of citations, and other product specific information.

Notch1 Antibody A301-894A



Detection of Human NOTCH1 by Western Blot of Immunoprecipitates. *Samples:* Whole cell lysate (1 mg for IP, 20% of IP loaded) from HeLa cells. *Antibodies:* Affinity purified rabbit anti-NOTCH1 antibody A301-894A (lot number A301-894A-2) used for IP at 3 µg/mg lysate. For blotting immunoprecipitated NOTCH1, A301-895A was used at 1 µg/ml, and the ReliaBLOT® Reagents and Procedures (Cat. No. WB120) were incorporated. *Detection:* Chemiluminescence with an exposure time of 3 minutes.

This antibody is qualified for the Proximity Ligation Assay (PLA). PLA uses paired antibodies, so please refer to the PLA page of our website for specific imaging obtained by pairing this antibody with other qualified antibodies. The above image shows representative results for PLA using three color fluorescence, including DAPI stained nuclei (blue), phalloidin stained cytoplasmic F-actin (green), and PLA positive signal (red).