

SOS2 Antibody

Rabbit Polyclonal

Antigen Affinity Purified Protein ID NP_008870.2

Catalog No. A301-893A GeneID 6655

Lot No. A301-893A-3

APPLICATIONS	WB, IP
SPECIES REACTIVITY	Human, Mouse
AMOUNT	100 µl
CONCENTRATION	1000 µg/ml
STORAGE/SHELF LIFE	2 – 8°C / 1 year from date of receipt
PHYSICAL STATE	Liquid
BUFFER	Tris-citrate/phosphate buffer, pH 7 to 8 containing 0.09% Sodium Azide
ISOTYPE	IgG
ORIGIN	USA
PRODUCTION PROCEDURES	Antibody was affinity purified using an epitope specific to SOS2 immobilized on solid support.

The epitope recognized by A301-893A maps to a region between residue 1282 and 1332 of human son of sevenless ortholog 2 using the numbering given in entry NP_008870.2 (GeneID 6655).

Immunoglobulin concentration was determined by extinction coefficient: absorbance at 280 nm of 1.4 equals 1.0 mg of IgG.

APPLICATIONS Centrifuge tube to remove product from lid. Optimal working dilutions should be determined experimentally by the investigator. Prepare working dilution immediately before use.

Western Blot 1:2,000 – 1:10,000

Immunoprecipitation 2 – 10 µg/mg lysate

ADDITIONAL INFO <https://www.bethyl.com/product/A301-893A>

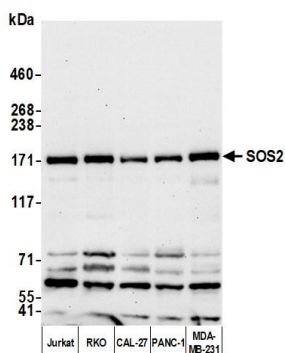
Use the link above to view SDS, a current list of citations, and other product specific information.

IP-western blot protocol: https://www.bethyl.com/content/protocol_IP_WB

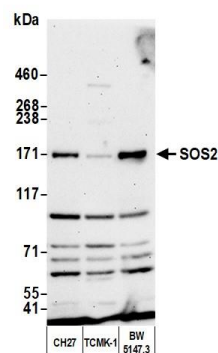
This document certifies that this product has met all of the quality control standards defined by Bethyl Laboratories, Inc.

Michael Spencer, PhD

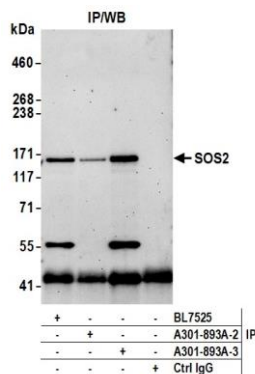
Date: February 10, 2022



Detection of human SOS2 by western blot. *Samples:* Whole cell lysate (25 μ g) from Jurkat, RKO, CAL-27, PANC-1, and MDA-MB-231 cells prepared using NETN lysis buffer. *Antibody:* Affinity purified rabbit anti-SOS2 antibody (A301-893A lot 3) used for WB at 0.4 μ g/ml. *Detection:* Chemiluminescence with an exposure time of



Detection of mouse SOS2 by western blot. *Samples:* Whole cell lysate (25 μ g) from CH27, TCMK-1, and BW5147.3 cells prepared using NETN lysis buffer. *Antibody:* Affinity purified rabbit anti-SOS2 antibody (A301-893A lot 3) used for WB at 0.4 μ g/ml. *Detection:* Chemiluminescence with an exposure time of 30 seconds.



Detection of human SOS2 by western blot of immunoprecipitates. *Samples:* Whole cell lysate (1.0 mg per IP reaction; 20% of IP loaded) from Jurkat cells prepared using NETN lysis buffer. *Antibodies:* Affinity purified rabbit anti-SOS2 antibody (A301-893A lot 3) used for IP at 6 μ g per reaction. SOS2 was also immunoprecipitated by a previous lot of this antibody (A301-893A lot 2) and a second antibody against a different epitope of SOS2 (BL7525). For blotting immunoprecipitated SOS2, A301-893A was used at 0.4 μ g/ml. *Detection:* Chemiluminescence with an exposure time of 75 seconds.