

# UFD1 Antibody

Rabbit Polyclonal

Antigen Affinity Purified

Protein ID NP\_005650.2

Catalog No. A301-876A

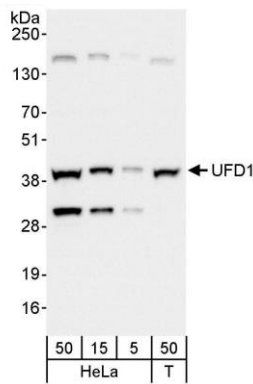
GeneID 7353

Lot No. A301-876A-1

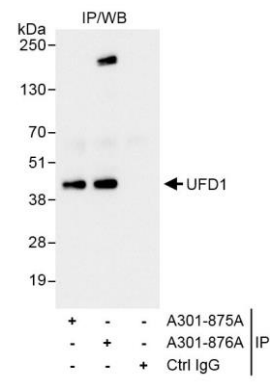


<b>APPLICATIONS</b>	WB, IP
<b>SPECIES REACTIVITY</b>	Human
<b>PRESUMED REACTIVITY</b>	Based on 100% sequence identity, this antibody is predicted to react with Mouse and Rat
<b>AMOUNT</b>	100 µl
<b>CONCENTRATION</b>	200 µg/ml
<b>STORAGE/SHELF LIFE</b>	2 - 8° C / 1 year from date of receipt
<b>PHYSICAL STATE</b>	Liquid
<b>BUFFER</b>	Tris-buffered Saline containing 0.1% BSA and 0.09% Sodium Azide
<b>ISOTYPE</b>	IgG
<b>ORIGIN</b>	USA
<b>PRODUCTION PROCEDURES</b>	<p>Antibody was affinity purified using an epitope specific to UFD1 immobilized on solid support.</p> <p>The epitope recognized by A301-876A maps to a region between residue 257 and 307 of human ubiquitin fusion degradation 1 using the numbering given in entry NP_005650.2 (GeneID 7353).</p> <p>Immunoglobulin concentration was determined by extinction coefficient: absorbance at 280 nm of 1.4 equals 1.0 mg of IgG.</p>
<b>APPLICATIONS</b>	<p>Centrifuge tube to remove product from lid. Optimal working dilutions should be determined experimentally by the investigator. Prepare working dilution immediately before use.</p> <p>Western Blot 1:2,000 – 1:10,000</p> <p>Immunoprecipitation 2 – 5 µg/mg lysate</p>
<b>APPLICATION NOTES</b>	<p>Western blot of immunoprecipitates performed using Normal Pig Serum (Cat. No. S100-020), Goat anti-Rabbit Light Chain HRP Conjugate (Cat. No. A120-113P) and 4-20% SDS-PAGE (link to IP-western blot protocol in Additional Info section below).</p> <p>Western blot of lysates performed using standard western blot reagents and 4-20% SDS-PAGE.</p>
<b>ADDITIONAL INFO</b>	<p><a href="https://www.bethyl.com/product/A301-876A">https://www.bethyl.com/product/A301-876A</a></p> <p>Use the link above to view SDS, a current list of citations, and other product specific information. IP-western blot protocol <a href="https://www.bethyl.com/content/protocol_IP_WB">https://www.bethyl.com/content/protocol_IP_WB</a></p>

This document certifies that this product has met all of the quality control standards defined by Bethyl Laboratories, Inc.  
Eric McIntush, PhD | Chief Scientific Officer Date: October 22, 2019



**Detection of human UFD1 by western blot.** *Samples:* Whole cell lysate from HeLa (5, 15 and 50 µg for WB) and HEK293T (T; 50 µg) cells. *Antibodies:* Affinity purified rabbit anti-UFD1 antibody A301-876A (A301-876A-1) used for WB at 0.04 µg/m. *Detection:* Chemiluminescence with exposure time of 3 seconds.



**Detection of human UFD1 by western blot of immunoprecipitates.** *Samples:* Whole cell lysate (1 mg for IP, 20% of IP loaded) from HeLa cells. *Antibodies:* Affinity purified rabbit anti-UFD1 antibody A301-876A (A301-876A-1) used for IP at 3 µg/mg lysate. UFD1 was also immunoprecipitated by rabbit anti-UFD1 antibody A301-875A, which recognizes an upstream epitope. For blotting immunoprecipitated UFD1, A301-875A was used at 1.0 µg/ml. *Detection:* Chemiluminescence with exposure time of 3 seconds.