

UFD1 Antibody

Rabbit Polyclonal

Antigen Affinity Purified

Protein ID NP_005650.2

Catalog No. A301-875A

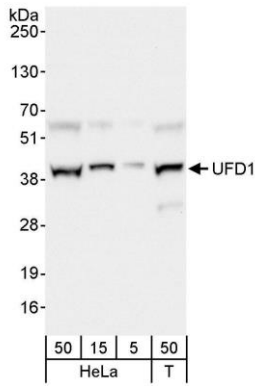
GeneID 7353

Lot No. A301-875A-1

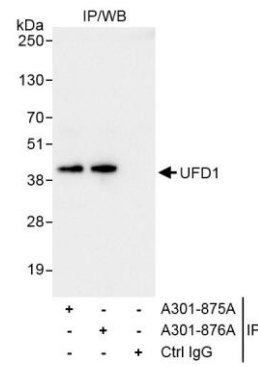


APPLICATIONS	WB, IP
SPECIES REACTIVITY	Human
AMOUNT	100 µl
CONCENTRATION	200 µg/ml
STORAGE/SHELF LIFE	2 – 8° C / 1 year from date of receipt
PHYSICAL STATE	Liquid
BUFFER	Tris-buffered Saline containing 0.1% BSA and 0.09% Sodium Azide
ISOTYPE	IgG
ORIGIN	USA
PRODUCTION PROCEDURES	Antibody was affinity purified using an epitope specific to UFD1 immobilized on solid support. The epitope recognized by A301-875A maps to a region between residue 175 and 225 of human ubiquitin fusion degradation 1 using the numbering given in entry NP_005650.2 (GeneID 7353). Immunoglobulin concentration was determined by extinction coefficient: absorbance at 280 nm of 1.4 equals 1.0 mg of IgG.
APPLICATIONS	Centrifuge tube to remove product from lid. Optimal working dilutions should be determined experimentally by the investigator. Prepare working dilution immediately before use. Western Blot 1:2,000 – 1:10,000 Immunoprecipitation 2 – 5 µg/mg lysate
APPLICATION NOTES	Western blot of immunoprecipitates performed using Normal Pig Serum (Cat. No. S100-020), Goat anti-Rabbit Light Chain HRP Conjugate (Cat. No. A120-113P) and 4-20% SDS-PAGE (link to IP-western blot protocol in Additional Info section below). Western blot of lysates performed using standard western blot reagents and 4-20% SDS-PAGE.
ADDITIONAL INFO	https://www.bethyl.com/product/A301-875A Use the link above to view SDS, a current list of citations, and other product specific information. IP-western blot protocol https://www.bethyl.com/content/protocol_IP_WB

This document certifies that this product has met all of the quality control standards defined by Bethyl Laboratories, Inc.
Eric McIntush, PhD | Chief Scientific Officer Date: November 12, 2019



Detection of human UFD1 by western blot. Samples: Whole cell lysate from HeLa (5, 15, and 50 µg) and HEK293T (T; 50 µg) cells. **Antibody:** Affinity purified rabbit anti-UFD1 antibody A301-875A (A301-875A-1) used at 0.04 µg/ml. **Detection:** Chemiluminescence with an exposure time of 3 seconds.



Detection of human UFD1 by western blot of immunoprecipitates. Samples: Whole cell lysate (1 mg for IP, 20% of IP loaded) from HeLa cells. **Antibodies:** Affinity purified rabbit anti-UFD1 antibody A301-875A (A301-875A-1) used for IP at 3 µg/mg lysate. UFD1 was also immunoprecipitated by rabbit anti-UFD1 antibody A301-876A, which recognizes a downstream epitope. For blotting immunoprecipitated UFD1, A301-875A was used at 0.4 µg/ml. **Detection:** Chemiluminescence with exposure time of 3 seconds.