

# UBE2O Antibody

Rabbit Polyclonal

Antigen Affinity Purified	RefSeq ID	NP_071349.2
Catalog No. A301-873A	Uniprot ID	Q9C0C9
Lot No. 4	GeneID	63893

---

<b>APPLICATIONS</b>	WB, IP
<b>SPECIES REACTIVITY</b>	Human, Mouse
<b>AMOUNT</b>	100 µl
<b>CONCENTRATION</b>	200 µg/ml
<b>STORAGE/SHELF LIFE</b>	2 – 8°C / 1 year from date of receipt
<b>PHYSICAL STATE</b>	Liquid
<b>BUFFER</b>	Tris-buffered Saline containing 0.1% BSA and 0.09% Sodium Azide
<b>ISOTYPE</b>	IgG
<b>ORIGIN</b>	USA
<b>PRODUCTION PROCEDURES</b>	Antibody was affinity purified using an epitope specific to UBE2O immobilized on solid support.

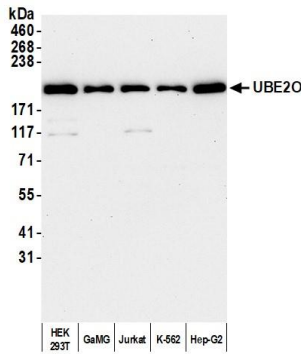
The epitope recognized by A301-873A maps to a region between residue 725 and 775 of human ubiquitin-conjugating enzyme E2O using the numbering given in entry NP\_071349.2 (GeneID 63893).

Immunoglobulin concentration was determined by extinction coefficient: absorbance at 280 nm of 1.4 equals 1.0 mg of IgG.

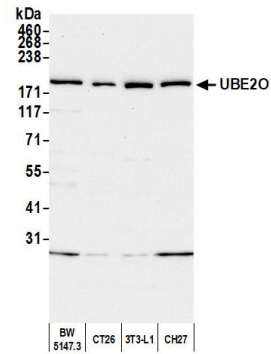
<b>APPLICATIONS</b>	Centrifuge tube to remove product from lid. Optimal working dilutions should be determined experimentally by the investigator. Prepare working dilution immediately before use.
	Western Blot                      1:2,000 – 1:10,000
	Immunoprecipitation          2 – 10 µg/mg lysate

<b>ADDITIONAL INFO</b>	<a href="https://www.fortislife.com/p/A301-873A">https://www.fortislife.com/p/A301-873A</a> Use the link above to view SDS, a current list of citations, and other product specific information.
------------------------	---

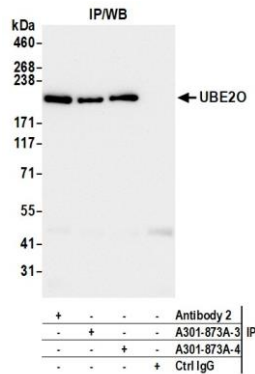
This document certifies that this product has met all of the quality control standards defined by Bethyl Laboratories, Inc.  
Michael Spencer, PhD Date: October 5, 2023



**Detection of human UBE2O by western blot.** *Samples:* Whole cell lysate (25 µg) from HEK293T, GaMG, Jurkat, K-562, and Hep-G2 cells prepared using NETN lysis buffer. *Antibody:* Affinity purified rabbit anti-UBE2O antibody (A301-873A lot 4) used for WB at 0.04 µg/ml. *Detection:* Chemiluminescence with an exposure time of 75 seconds.



**Detection of mouse UBE2O by western blot.** *Samples:* Whole cell lysate (50 µg) from BW5147.3, CT26, 3T3-L1, and CH27 cells prepared using NETN lysis buffer. *Antibody:* Affinity purified rabbit anti-UBE2O antibody (A301-873A lot 4) used for WB at 0.1 µg/ml. *Detection:* Chemiluminescence with an exposure time of 30 seconds.



**Detection of human UBE2O by western blot of immunoprecipitates.** *Samples:* Whole cell lysate (1.0 mg per IP reaction; 20% of IP loaded) from HEK293T cells prepared using NETN lysis buffer. *Antibodies:* Affinity purified rabbit anti-UBE2O antibody (A301-873A lot 4) used for IP at 6 µg per reaction. UBE2O was also immunoprecipitated by a previous lot of this antibody (A301-873A lot 3) and a second antibody against a different epitope of UBE2O (Antibody 2). For blotting immunoprecipitated UBE2O, A301-873A was used at 0.1 µg/ml. *Detection:* Chemiluminescence with an exposure time of 10 seconds.