

# Phospho Histone H3 (S10) Antibody

Rabbit Polyclonal

Antigen Affinity Purified

Protein ID NP\_003520.1

Catalog No. A301-844A

GeneID 8350

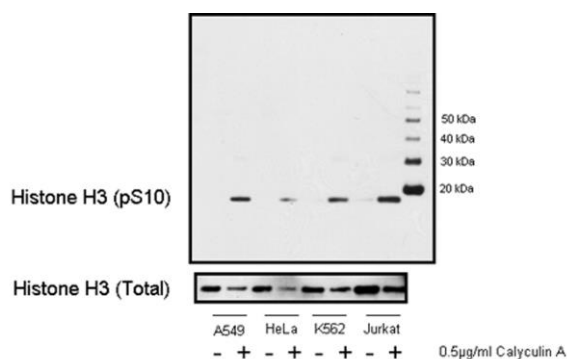
Lot No. A301-844A-1



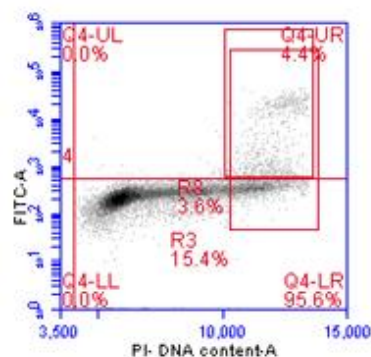
<b>APPLICATIONS</b>	WB, IHC, ICC-IF, F								
<b>SPECIES REACTIVITY</b>	Human, Mouse								
<b>PRESUMED REACTIVITY</b>	Based on 100% sequence identity, this antibody is predicted to react with Rat, D. melanogaster, Zebrafish, X. laevis, X. tropicalis, Chicken, Bovine, Rabbit, Pig and Orangutan								
<b>AMOUNT</b>	100 µl								
<b>CONCENTRATION</b>	200 µg/ml								
<b>STORAGE/SHELF LIFE</b>	2 – 8° C / 1 year from date of receipt								
<b>PHYSICAL STATE</b>	Liquid								
<b>BUFFER</b>	Tris-buffered Saline containing 0.1% BSA and 0.09% Sodium Azide								
<b>ISOTYPE</b>	IgG								
<b>ORIGIN</b>	USA								
<b>PRODUCTION PROCEDURES</b>	<p>Antibody was affinity purified using an epitope specific to Phospho Histone H3 (Ser10) immobilized on solid support. Immunogen for A301-844A was a synthetic phosphorylated peptide, which represented a portion of human Histone H3 surrounding serine 10 according to the numbering given in entry NP_003520.1 (GeneID 8350).</p> <p>Immunoglobulin concentration was determined by extinction coefficient: absorbance at 280 nm of 1.4 equals 1.0 mg of IgG.</p>								
<b>APPLICATIONS</b>	<p>Centrifuge tube to remove product from lid. Optimal working dilutions should be determined experimentally by the investigator. Prepare working dilution immediately before use.</p> <table><tr><td>Western Blot</td><td>1:5,000 – 1:10,000</td></tr><tr><td>Immunohistochemistry</td><td>1:2,000 – 1:10,000. Epitope retrieval with citrate buffer pH 6.0 is recommended for FFPE tissue sections.</td></tr><tr><td>Immunofluorescence (ICC)</td><td>1:2,000 – 1:10,000. Formaldehyde fixation and permeabilization with Triton-X 100 is recommended. Acetone fixation may adversely effect staining.</td></tr><tr><td>Flow Cytometry</td><td>0.4 µg per 1 X 10<sup>6</sup> cells in a 150 µl volume</td></tr></table>	Western Blot	1:5,000 – 1:10,000	Immunohistochemistry	1:2,000 – 1:10,000. Epitope retrieval with citrate buffer pH 6.0 is recommended for FFPE tissue sections.	Immunofluorescence (ICC)	1:2,000 – 1:10,000. Formaldehyde fixation and permeabilization with Triton-X 100 is recommended. Acetone fixation may adversely effect staining.	Flow Cytometry	0.4 µg per 1 X 10 <sup>6</sup> cells in a 150 µl volume
Western Blot	1:5,000 – 1:10,000								
Immunohistochemistry	1:2,000 – 1:10,000. Epitope retrieval with citrate buffer pH 6.0 is recommended for FFPE tissue sections.								
Immunofluorescence (ICC)	1:2,000 – 1:10,000. Formaldehyde fixation and permeabilization with Triton-X 100 is recommended. Acetone fixation may adversely effect staining.								
Flow Cytometry	0.4 µg per 1 X 10 <sup>6</sup> cells in a 150 µl volume								
<b>APPLICATION NOTES</b>	Western blot of lysates performed using standard western blot reagents and 4–12% SDS-PAGE.								
<b>IHC HUMAN CONTROLS</b>	Colon Carcinoma, Ovarian Carcinoma, HeLa Cells								
<b>IHC MOUSE CONTROLS</b>	Squamous Cell Carcinoma								
<b>ADDITIONAL INFO</b>	<p><a href="https://www.bethyl.com/product/A301-844A">https://www.bethyl.com/product/A301-844A</a></p> <p>Use the link above to view SDS, a current list of citations, and other product specific information.</p>								

This document certifies that this product has met all of the quality control standards defined by Bethyl Laboratories, Inc.  
Eric McIntush, PhD | Chief Scientific Officer

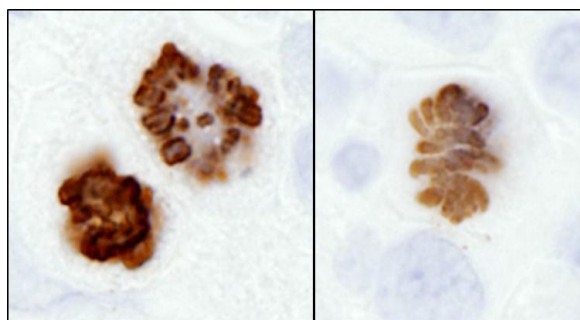
Date: June 21, 2019



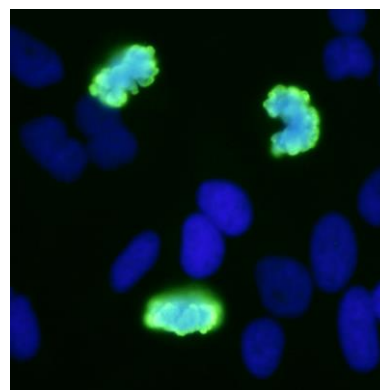
**Detection of human Phospho Histone H3 (pS10) by western blot.** A-549, HeLa, K-562, and Jurkat cell lines were stimulated with 0.5 µg/ml of Calyculin A at 37°C, 5% CO<sub>2</sub> for 15 minutes. Cells were subsequently lysed and 1 µg of appropriate cell lysates were loaded into respective wells. Western blot was performed using affinity purified rabbit anti-Histone H3 (pS10) antibody A301-844A (20 ng/ml) and affinity purified rabbit anti-Histone H3 antibody (1 µg/ml; Cat. No. A300-822A). Western blots were developed utilizing chemiluminescence with an exposure time of 30 seconds.



**Detection of Phospho Histone H3 (pS10).** Asynchronous Jurkat cells were fixed in 1.5% PFA and permeabilized in 90% methanol. 1 x 10<sup>6</sup> cells were stained with 0.4 µg anti-phospho Histone H3 (S10) [A301-844A] in a 150 µl reaction.



**Detection of human and mouse Histone H3 (S10) by immunohistochemistry.** *Sample:* FFPE section of human colon carcinoma (left) and mouse squamous cell carcinoma (right). *Antibody:* Affinity purified rabbit anti-Phospho Histone H3 (S10) (Cat. No. A301-844A Lot1) used at a dilution of 1:2,500 (0.08 µg/ml). *Detection:* DAB



**Detection of human Phospho Histone H3 (S10) by immunocytochemistry.** *Samples:* NBF-fixed asynchronous HeLa cells. *Antibody:* Affinity purified rabbit anti-Phospho Histone H3 (S10) (Cat. No. A301-844A Lot1) used at a dilution of 1:2,500 (0.08 µg/ml). *Detection:* Green fluorescent goat antirabbit IgG-FITC conjugated (Cat. No. A120-101F) used at a dilution of 1:100.