

GCN1L1 Antibody

Rabbit Polyclonal

Antigen Affinity Purified

Protein ID NP_006827.1

Catalog No. A301-843A

GeneID 10985

Lot No. A301-843A-3



APPLICATIONS WB, IP

SPECIES REACTIVITY Human, Mouse, Rat

AMOUNT 100 µl

CONCENTRATION 200 µg/ml

STORAGE/SHELF LIFE 2 – 8° C / 1 year from date of receipt

PHYSICAL STATE Liquid

BUFFER Tris-buffered Saline containing 0.1% BSA and 0.09% Sodium Azide

ISOTYPE IgG

ORIGIN USA

PRODUCTION PROCEDURES Antibody was affinity purified using an epitope specific to GCN1L1 immobilized on solid support.

The epitope recognized by A301-843A maps to a region between residue 2621 and 2671 of human general control of amino-acid synthesis 1-like 1 using the numbering given in entry NP_006827.1 (GeneID 10985).

Immunoglobulin concentration was determined by extinction coefficient: absorbance at 280 nm of 1.4 equals 1.0 mg of IgG.

APPLICATIONS Centrifuge tube to remove product from lid. Optimal working dilutions should be determined experimentally by the investigator. Prepare working dilution immediately before use.

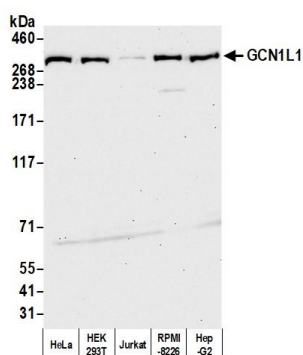
Western Blot 1:2,000 – 1:10,000

Immunoprecipitation 2 – 10 µg/mg lysate

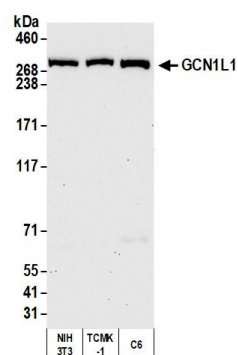
ADDITIONAL INFO <https://www.bethyl.com/product/A301-843A>

Use the link above to view SDS, a current list of citations, and other product specific information. IP-western blot protocol: https://www.bethyl.com/content/protocol_IP_WB

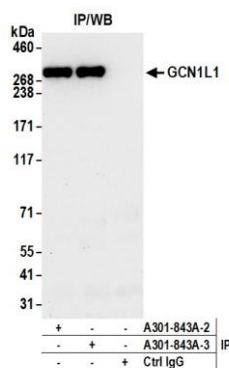
This document certifies that this product has met all of the quality control standards defined by Bethyl Laboratories, Inc.
Eric McIntush, PhD | Chief Scientific Officer Date: October 20, 2020



Detection of human GCN1L1 by western blot. *Samples:* Whole cell lysate (50 μ g) from HeLa, HEK293T, Jurkat, RPMI-8226, and Hep-G2 cells prepared using NETN lysis buffer. *Antibody:* Affinity purified rabbit anti-GCN1L1 antibody A301-843A (lot A301-843A-3) used for WB at 0.04 μ g/ml. *Detection:* Chemiluminescence with an exposure time of 30 seconds.



Detection of mouse and rat GCN1L1 by western blot. *Samples:* Whole cell lysate (50 μ g) from NIH 3T3, TCMK-1, and C6 cells prepared using NETN lysis buffer. *Antibody:* Affinity purified rabbit anti-GCN1L1 antibody A301-843A (lot A301-843A-3) used for WB at 0.04 μ g/ml. *Detection:* Chemiluminescence with an exposure time of 30 seconds.



Detection of human GCN1L1 by western blot of immunoprecipitates. *Samples:* Whole cell lysate (1.0 mg per IP reaction; 20% of IP loaded) from HeLa cells prepared using NETN lysis buffer. *Antibodies:* Affinity purified rabbit anti-GCN1L1 antibody A301-843A (lot A301-843A-3) used for IP at 6 μ g per reaction. GCN1L1 was also immunoprecipitated by a previous lot of this antibody (lot A301-843A). For blotting immunoprecipitated GCN1L1, A301-843A was used at 0.04 μ g/ml. *Detection:* Chemiluminescence with an exposure time of 30 seconds.