

# ZCCHC8 Antibody

Rabbit Polyclonal

Antigen Affinity Purified

Protein ID NP\_060082.2

Catalog No. A301-805A

GeneID 55596

Lot No. A301-805A-1



<b>APPLICATIONS</b>	IP, IHC, IHC-IF
<b>SPECIES REACTIVITY</b>	Human
<b>AMOUNT</b>	100 µl
<b>CONCENTRATION</b>	1000 µg/ml
<b>STORAGE/SHELF LIFE</b>	2 - 8° C / 1 year from date of receipt
<b>PHYSICAL STATE</b>	Liquid
<b>BUFFER</b>	Tris-citrate/phosphate buffer, pH 7 to 8 containing 0.09% Sodium Azide
<b>ISOTYPE</b>	IgG
<b>ORIGIN</b>	USA
<b>PRODUCTION PROCEDURES</b>	Antibody was affinity purified using an epitope specific to ZCCHC8 immobilized on solid support.

The epitope recognized by A301-805A maps to a region between residue 1 and 50 of human zinc finger, CCHC domain containing 8 using the numbering given in entry NP\_060082.2 (GeneID 55596).

Immunoglobulin concentration was determined by extinction coefficient: absorbance at 280 nm of 1.4 equals 1.0 mg of IgG.

**APPLICATIONS** Centrifuge tube to remove product from lid. Optimal working dilutions should be determined experimentally by the investigator. Prepare working dilution immediately before use.

Western Blot Not recommended. Use rabbit anti-ZCCHC8 antibody A301-806A.

Immunoprecipitation 2 - 5 µg/mg lysate

Immunohistochemistry 1:2,000 - 1:10,000. Epitope retrieval with citrate buffer pH 6.0 is recommended for FFPE tissue sections.

Immunofluorescence (IHC) 1:1,000 - 1:5,000

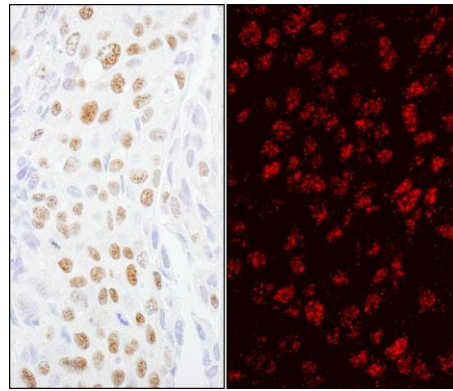
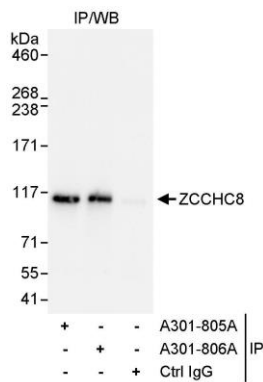
**APPLICATION NOTES** Western blot of immunoprecipitates performed using Normal Pig Serum (Cat. No. S100-020), Goat anti-Rabbit Light Chain HRP Conjugate (Cat. No. A120-113P) and 4-8% SDS-PAGE (link to IP-western blot protocol in Additional Info section below).

**IHC HUMAN CONTROLS** Breast Carcinoma, Colon Carcinoma, Ovarian Carcinoma, Prostate Carcinoma, Stomach Adenocarcinoma

**ADDITIONAL INFO** <https://www.bethyl.com/product/A301-805A>

Use the link above to view SDS, a current list of citations, and other product specific information. IP-western blot protocol: [https://www.bethyl.com/content/protocol\\_IP\\_WB](https://www.bethyl.com/content/protocol_IP_WB)

This document certifies that this product has met all of the quality control standards defined by Bethyl Laboratories, Inc.  
Eric McIntush, PhD | Chief Scientific Officer Date: June 21, 2019



**Detection of human ZCCHC8 by western blot of immunoprecipitates.** *Samples:* Whole cell lysate (1 mg for IP, 20% of IP loaded) from HeLa cells. *Antibody:* Affinity purified rabbit anti-ZCCHC8 antibody A301-805A used for IP at 3  $\mu\text{g}/\text{mg}$  lysate. ZCCHC8 was also immunoprecipitated by rabbit anti-ZCCHC8 antibody A301-806A, which recognizes a downstream epitope. For blotting immunoprecipitated ZCCHC8, A301-806A was used at 0.1  $\mu\text{g}/\text{ml}$ . *Detection:* Chemiluminescence with an exposure time of 5 seconds.

**Detection of human ZCCHC8 by immunohistochemistry.** *Sample:* FFPE sections of human breast carcinoma. *Antibody:* Affinity purified rabbit anti-ZCCHC8 (Cat. No. A301-805A Lot1) used at a dilution of 1:5,000 (0.2  $\mu\text{g}/\text{ml}$ ) and 1:2,000 (0.5  $\mu\text{g}/\text{ml}$ ). *Detection:* DAB and Red-fluorescent goat anti-rabbit IgG-heavy and light chain, cross-adsorbed Antibody DyLight® 594 Conjugated used at a dilution of 1:100