

NCBP1 /CBP80 Antibody

Rabbit Polyclonal

Antigen Affinity Purified Protein ID NP_002477.1
Catalog No. A301-794A GeneID 4686
Lot No. A301-794A-3



APPLICATIONS	WB, IP, IHC
SPECIES REACTIVITY	Human, Mouse
PRESUMED REACTIVITY	Based on 100% sequence identity, this antibody is predicted to react with Chicken
AMOUNT	100 µl
CONCENTRATION	1000 µg/ml
STORAGE/SHELF LIFE	2 – 8° C / 1 year from date of receipt
PHYSICAL STATE	Liquid
BUFFER	Tris-citrate/phosphate buffer, pH 7 to 8 containing 0.09% Sodium Azide
ISOTYPE	IgG
ORIGIN	USA
PRODUCTION PROCEDURES	Antibody was affinity purified using an epitope specific to NCBP1 /CBP80 immobilized on solid support.

The epitope recognized by A301-794A maps to a region between residue 482 and 532 of human nuclear cap binding protein subunit 1 (80 kDa nuclear cap-binding protein) using the numbering given in entry NP_002477.1 (GeneID 4686).

Immunoglobulin concentration was determined by extinction coefficient: absorbance at 280 nm of 1.4 equals 1.0 mg of IgG.

APPLICATIONS Centrifuge tube to remove product from lid. Optimal working dilutions should be determined experimentally by the investigator. Prepare working dilution immediately before use.

Western Blot	1:2,000 – 1:10,000
Immunoprecipitation	2 – 10 µg/mg lysate
Immunohistochemistry	1:500 – 1:2,000. Epitope retrieval with citrate buffer pH 6.0 is recommended for FFPE tissue sections.

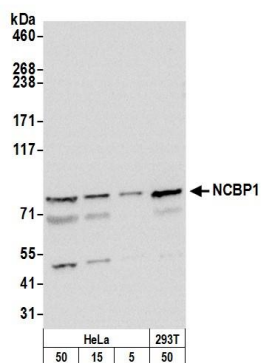
APPLICATION NOTES Western blot of immunoprecipitates performed using Normal Pig Serum (Cat. No. S100-020), Goat anti-Rabbit Light Chain HRP Conjugate (Cat. No. A120-113P) and 4-8% SDS-PAGE (link to IP-western blot protocol in Additional Info section below).

Western blot of lysates performed using standard western blot reagents and 4-8% SDS-PAGE.

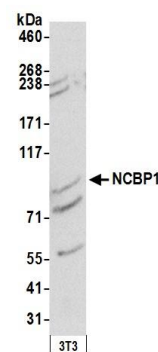
IHC HUMAN CONTROLS Anaplastic Thyroid Carcinoma, Ovarian Carcinoma, Prostate Carcinoma

ADDITIONAL INFO <https://www.bethyl.com/product/A301-794A>
Use the link above to view SDS, a current list of citations, and other product specific information.
IP-western blot protocol: https://www.bethyl.com/content/protocol_IP_WB

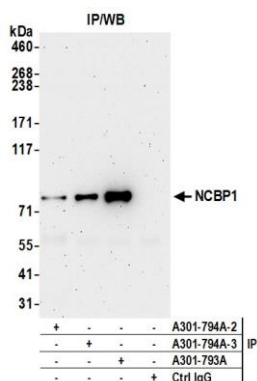
This document certifies that this product has met all of the quality control standards defined by Bethyl Laboratories, Inc.
Eric McIntush, PhD | Chief Scientific Officer Date: June 21, 2019



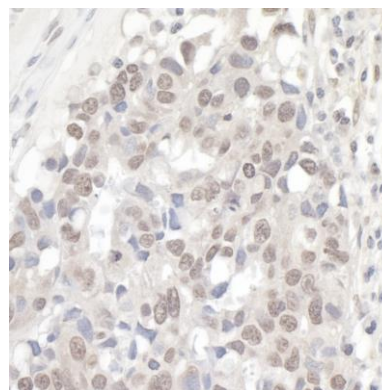
Detection of human NCBP1 by western blot. *Samples:* Whole cell lysate from HeLa, (5, 15 and 50 µg), and HEK293T (50 µg) cells prepared using NETN lysis buffer. *Antibody:* Affinity purified rabbit anti-NCBP1 antibody A301-794A (lot A301-794A-3) used for WB at 0.1 µg/ml. *Detection:* Chemiluminescence with an exposure time of 30 seconds.



Detection of mouse NCBP1 by western blot. *Samples:* Whole cell lysate (50 µg) from NIH 3T3 cells prepared using NETN lysis buffer. *Antibody:* Affinity purified rabbit anti-NCBP1 antibody A301-794A (lot A301-794A-3) used for WB at 0.1 µg/ml. *Detection:* Chemiluminescence with an exposure time of 3 minutes.



Detection of human NCBP1 by western blot of immunoprecipitates. *Samples:* Whole cell lysate (0.5 or 1.0 mg per IP reaction; 20% of IP loaded) from HEK293T cells prepared using NETN lysis buffer. *Antibodies:* Affinity purified rabbit anti-NCBP1 antibody A301-794A (lot A301-794A-3) used for IP at 6 µg per reaction. NCBP1 was also immunoprecipitated by a previous lot of this antibody (lot A301-794A-2) and rabbit anti-NCBP1 antibody A301-793A. For blotting immunoprecipitated NCBP1, A301-794A was used at 0.4 µg/ml. *Detection:* Chemiluminescence with an exposure time of 3 minutes.



Detection of human NCBP1/CBP80 by immunohistochemistry. *Sample:* FFPE section of human ovarian carcinoma. *Antibody:* Affinity purified rabbit anti-NCBP1/CBP80 (Cat. No. A301-794A Lot3) used at a dilution of 1:1,000 (1 µg/ml). *Detection:* DAB