

eIF4G1 / eIF4GI Antibody

Rabbit Polyclonal

Antigen Affinity Purified

Protein ID NP_886553.2

Catalog No. A301-776A

GeneID 1981

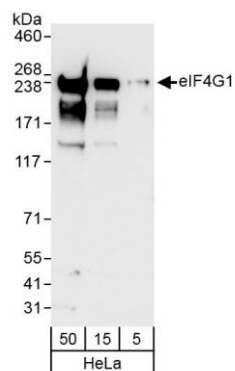
Lot No. A301-776A-1



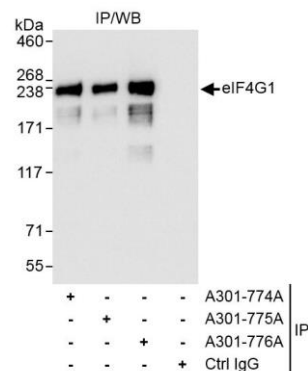
APPLICATIONS	WB, IP, IHC
SPECIES REACTIVITY	Human
AMOUNT	100 µl
CONCENTRATION	200 µg/ml
STORAGE/SHELF LIFE	2 – 8° C / 1 year from date of receipt
PHYSICAL STATE	Liquid
BUFFER	Tris-buffered Saline containing 0.1% BSA and 0.09% Sodium Azide
ISOTYPE	IgG
ORIGIN	USA
PRODUCTION PROCEDURES	Antibody was affinity purified using an epitope specific to eIF4G1 / eIF4GI immobilized on solid support. The epitope recognized by A301-775A maps to a region between residue 525 and 575 of human eukaryotic translation initiation factor 4 gamma, 1 using the numbering given in entry NP_886553.2 (GeneID 1981). Immunoglobulin concentration was determined by extinction coefficient: absorbance at 280 nm of 1.4 equals 1.0 mg of IgG.
APPLICATIONS	Centrifuge tube to remove product from lid. Optimal working dilutions should be determined experimentally by the investigator. Prepare working dilution immediately before use. Western Blot 1:2,000 – 1:10,000 Immunoprecipitation 2 – 5 µg/mg lysate Immunohistochemistry 1:100 – 1:500. Epitope retrieval with citrate buffer pH 6.0 is recommended for FFPE tissue sections.
APPLICATION NOTES	Western blot of immunoprecipitates performed using Normal Pig Serum (Cat. No. S100-020), Goat anti-Rabbit Light Chain HRP Conjugate (Cat. No. A120-113P) and 4-8% SDS-PAGE (link to IP-western blot protocol in Additional Info section below). Western blot of lysates performed using standard western blot reagents and 4-8% SDS-PAGE.
IHC HUMAN CONTROLS	Ovarian Carcinoma
ADDITIONAL INFO	https://www.bethyl.com/product/A301-776A Use the link above to view SDS, a current list of citations, and other product specific information. IP-western blot protocol https://www.bethyl.com/content/protocol_IP_WB

This document certifies that this product has met all of the quality control standards defined by Bethyl Laboratories, Inc.
Eric McIntush, PhD | Chief Scientific Officer

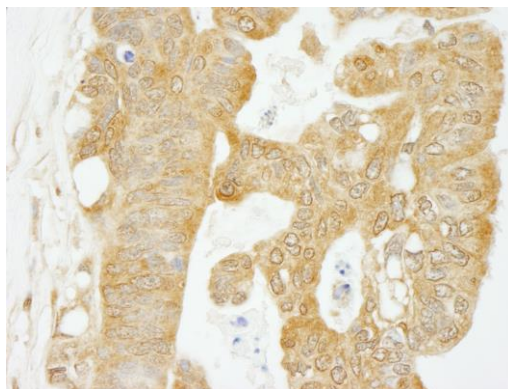
Date: October 23, 2019



Detection of human eIF4G1 by western blot. *Samples:* Whole cell lysate (5, 15 and 50 µg) from HeLa cells. *Antibody:* Affinity purified rabbit anti-eIF4G1 antibody A301-776A (lot A301-776A-1) used for WB at 0.04 µg/ml. *Detection:* Chemiluminescence with exposure time of 10 seconds.



Detection of human eIF4G1 by western blot of immunoprecipitates. *Samples:* Whole cell lysate (1 mg for IP, 20% of IP loaded) from HeLa cells. *Antibody:* Affinity purified rabbit anti-eIF4G1 antibody A301-776A (lot A301-776A-1) used for IP at 3 µg/mg lysate. eIF4G1 was also immunoprecipitated by rabbit anti-eIF4G1 antibodies A301-774A and A301-775A, which recognize other epitopes. For blotting immunoprecipitated eIF4G1, A301-776A was used at 1.0 µg/ml. *Detection:* Chemiluminescence with exposure time of 1 second.



Detection of human eIF4G1 by immunohistochemistry. *Sample:* FFPE section of human ovarian carcinoma. *Antibody:* Affinity purified rabbit anti-eIF4G1 (Cat. No. A301-776A) used at a dilution of 1:200 (1 µg/ml). *Detection:* DAB