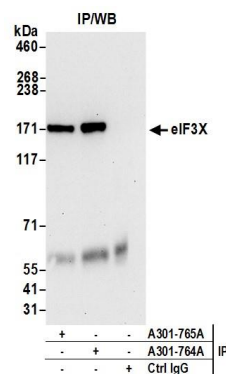


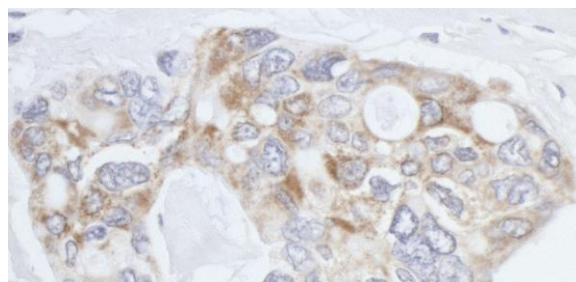
Detection of human and mouse eIF3X by western blot.

Samples: Whole cell lysate (50 µg) from HeLa, HEK293T, Jurkat, mouse TCMK-1, and mouse NIH 3T3 cells prepared using NETN lysis buffer. **Antibody:** Affinity purified rabbit anti-eIF3X antibody A301-764A (lot A301-764A-3) used for WB at 0.1 µg/ml. **Detection:** Chemiluminescence with an exposure time of 3 minutes.



Detection of human eIF3X by western blot of immunoprecipitates

Samples: Whole cell lysate (1.0 mg per IP reaction; 20% of IP loaded) from HeLa cells prepared using NETN lysis buffer. **Antibodies:** Affinity purified rabbit anti-eIF3X antibody A301-764A (lot A301-764A-3) used for IP at 3 µg per reaction. eIF3X was also immunoprecipitated by rabbit anti-eIF3X antibody A301-765A. For blotting immunoprecipitated eIF3X, A301-764A was used at 1 µg/ml. **Detection:** Chemiluminescence with an exposure time of 10 seconds.



Detection of human eIF3X by immunohistochemistry.

Sample: FFPE section of human ovarian carcinoma. **Antibody:** Affinity purified rabbit anti-eIF3X (Cat. No. A301-764A Lot3) used at a dilution of 1:200 (1µg/ml). **Detection:** DAB