

eIF3B/EIF3S9 Antibody

Rabbit Polyclonal

Antigen Affinity Purified	RefSeq ID	NP_003742.2
Catalog No. A301-761A	Uniprot ID	P55884
Lot No. 3	GeneID	8662

APPLICATIONS	WB, IP, IHC
SPECIES REACTIVITY	Human
AMOUNT	100 µl
CONCENTRATION	200 µg/ml
STORAGE/SHELF LIFE	2 – 8°C / 1 year from date of receipt
PHYSICAL STATE	Liquid
BUFFER	Tris-buffered Saline containing 0.1% BSA and 0.09% Sodium Azide
ISOTYPE	IgG
ORIGIN	USA
PRODUCTION PROCEDURES	Antibody was affinity purified using an epitope specific to eIF3B/EIF3S9 immobilized on solid support.

The epitope recognized by A301-761A maps to a region between residue 100 and 150 of human eukaryotic translation initiation factor 3, subunit B (eukaryotic translation initiation factor 3, subunit 9) using the numbering given in entry NP_003742.2 (GeneID 8662).

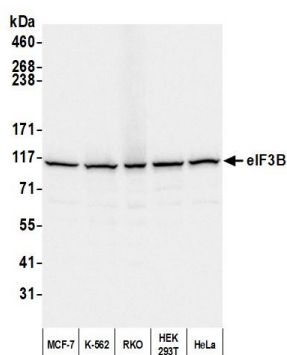
Immunoglobulin concentration was determined by extinction coefficient: absorbance at 280 nm of 1.4 equals 1.0 mg of IgG.

APPLICATIONS	Centrifuge tube to remove product from lid. Optimal working dilutions should be determined experimentally by the investigator. Prepare working dilution immediately before use.
	Western Blot 1:2,000 – 1:10,000
	Immunoprecipitation 2 – 10 µg/mg lysate
	Immunohistochemistry 1:100 – 1:500. Epitope retrieval with citrate buffer pH 6.0 is recommended for FFPE tissue sections.

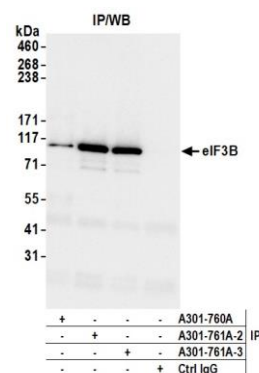
IHC HUMAN CONTROLS	Ovarian Carcinoma
---------------------------	-------------------

ADDITIONAL INFO	https://www.fortislife.com/p/A301-761A Use the link above to view SDS, a current list of citations, and other product specific information.
------------------------	---

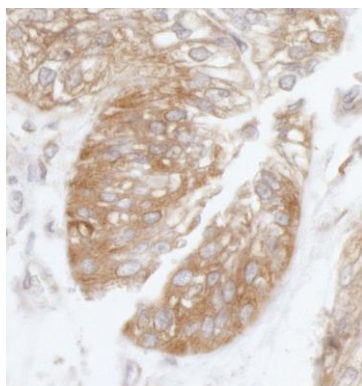
This document certifies that this product has met all of the quality control standards defined by Bethyl Laboratories, Inc.
Michael Spencer, PhD Date: June 9, 2023



Detection of human eIF3B by western blot. *Samples:* Whole cell lysate (50 μ g) from MCF-7, K-562, RKO, HEK293T, and HeLa cells prepared using NETN lysis buffer. *Antibody:* Affinity purified rabbit anti-eIF3B antibody (A301-761A lot 3) used for WB at 0.04 μ g/ml. *Detection:* Chemiluminescence with an exposure time of 3 seconds.



Detection of human eIF3B by western blot of immunoprecipitates. *Samples:* Whole cell lysate (1.0 mg per IP reaction; 20% of IP loaded) from HEK293T cells prepared using NETN lysis buffer. *Antibodies:* Affinity purified rabbit anti-eIF3B antibody (A301-761A lot 3) used for IP at 6 μ g per reaction. eIF3B was also immunoprecipitated by a previous lot of this antibody (A301-761A lot 2) and a second antibody against a different epitope of eIF3B (A301-760A). For blotting immunoprecipitated eIF3B, A301-761A was used at 0.04 μ g/ml. *Detection:* Chemiluminescence with an exposure time of 3 seconds.



Detection of human EIF3S9/eIF3B by immunohistochemistry. *Sample:* FFPE section of human ovarian carcinoma. *Antibody:* Affinity purified rabbit anti-EIF3S9/eIF3B (Cat. No. A301-761A Lot 2) used at a dilution of 1:200 (1 μ g/ml). *Detection:* DAB