

JARID1D/SMCY Antibody

Rabbit Polyclonal

Antigen Affinity Purified

Protein ID NP_004644.2

Catalog No. A301-751A

GeneID 8284

Lot No. A301-751A-4



APPLICATIONS	WB, IP
SPECIES REACTIVITY	Human
AMOUNT	100 µl
CONCENTRATION	200 µg/ml
STORAGE/SHELF LIFE	2 – 8° C / 1 year from date of receipt
PHYSICAL STATE	Liquid
BUFFER	Tris-buffered Saline containing 0.1% BSA and 0.09% Sodium Azide
ISOTYPE	IgG
ORIGIN	USA
PRODUCTION PROCEDURES	Antibody was affinity purified using an epitope specific to JARID1D/SMCY immobilized on solid support.

The epitope recognized by A301-751A maps to a region between residue 1490 and 1540 of human SMC (mouse) homolog, Y chromosome (jumonji, AT rich interactive domain 1D) using the numbering given in entry NP_004644.2 (GeneID 8284).

Immunoglobulin concentration was determined by extinction coefficient: absorbance at 280 nm of 1.4 equals 1.0 mg of IgG.

APPLICATIONS Centrifuge tube to remove product from lid. Optimal working dilutions should be determined experimentally by the investigator. Prepare working dilution immediately before use.

Western Blot 1:2,000 – 1:10,000

Immunoprecipitation 2 – 5 µg/mg lysate

APPLICATION NOTES Western blot of immunoprecipitates performed using Normal Pig Serum (Cat. No. S100-020), Goat anti-Rabbit Light Chain HRP Conjugate (Cat. No. A120-113P) and 4-8% SDS-PAGE (link to IP-western blot protocol in Additional Info section below).

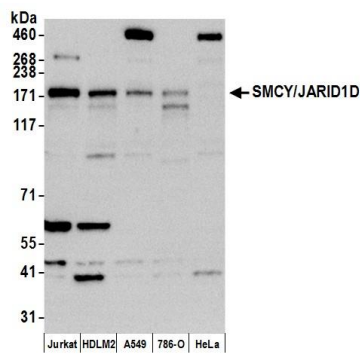
Western blot of lysates performed using standard western blot reagents and 4-8% SDS-PAGE.

ADDITIONAL INFO <https://www.bethyl.com/product/A301-751A>

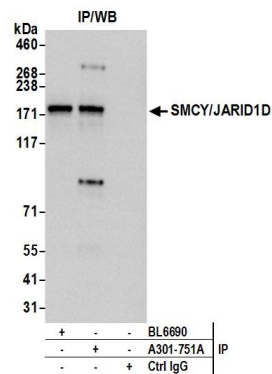
Use the link above to view SDS, a current list of citations, and other product specific information.

IP-western blot protocol: https://www.bethyl.com/content/protocol_IP_WB

This document certifies that this product has met all of the quality control standards defined by Bethyl Laboratories, Inc.
Eric McIntush, PhD | Chief Scientific Officer Date: June 21, 2019



Detection of human SMCY/JARID1D by western blot.
Samples: Whole cell lysate (15 µg) from Jurkat, HDLM-2, A-549, 786-O, and HeLa cells prepared using NETN lysis buffer. *Antibody:* Affinity purified rabbit anti-SMCY/JARID1D antibody A301-751A (lot A301-751A-4) used for WB at 0.1 µg/ml. *Detection:* Chemiluminescence with an exposure time of 3 minutes.



Detection of human SMCY/JARID1D by western blot of immunoprecipitates. *Samples:* Whole cell lysate (1.0 mg per IP reaction; 20% of IP loaded) from Jurkat cells prepared using NETN lysis buffer. *Antibodies:* Affinity purified rabbit anti-SMCY/JARID1D antibody A301-751A (lot A301-751A-4) used for IP at 3 µg per reaction. SMCY/JARID1D was also immunoprecipitated by rabbit anti-SMCY/JARID1D antibody BL6690. For blotting immunoprecipitated SMCY/JARID1D, A301-751A was used at 1 µg/ml. *Detection:* Chemiluminescence with an exposure time of 30 seconds.