

Filamin B Antibody

Rabbit Polyclonal

Antigen Affinity Purified

Catalog No. A301-724A

Lot No. A301-724A-1

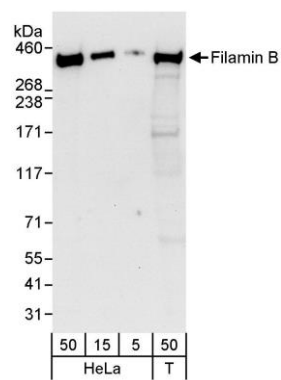
Protein ID NP_001448.2

GeneID 2317



APPLICATIONS	WB
SPECIES REACTIVITY	Human
AMOUNT	100 µl
CONCENTRATION	200 µg/ml
STORAGE/SHELF LIFE	2 – 8° C / 1 year from date of receipt
PHYSICAL STATE	Liquid
BUFFER	Tris-buffered Saline containing 0.1% BSA and 0.09% Sodium Azide
ISOTYPE	IgG
ORIGIN	USA
PRODUCTION PROCEDURES	<p>Antibody was affinity purified using an epitope specific to Filamin B immobilized on solid support.</p> <p>The epitope recognized by A301-724A maps to a region between residue 975 and 1025 of human filamin B, beta (actin binding protein 278) using the numbering given in entry NP_001448.2 (GeneID 2317).</p> <p>Immunoglobulin concentration was determined by extinction coefficient: absorbance at 280 nm of 1.4 equals 1.0 mg of IgG.</p>
APPLICATIONS	<p>Centrifuge tube to remove product from lid. Optimal working dilutions should be determined experimentally by the investigator. Prepare working dilution immediately before use.</p> <p>Western Blot 1:2,000 – 1:10,000</p> <p>Immunoprecipitation Not recommended</p>
APPLICATION NOTES	Western blot of lysates performed using standard western blot reagents and 4-8% SDS-PAGE.
ADDITIONAL INFO	<p>https://www.bethyl.com/product/A301-724A</p> <p>Use the link above to view SDS, a current list of citations, and other product specific information.</p>

This document certifies that this product has met all of the quality control standards defined by Bethyl Laboratories, Inc.
Eric McIntush, PhD | Chief Scientific Officer Date: June 21, 2019



Detection of human Filamin B by western blot. *Samples:* Whole cell lysate from HeLa (5, 15 and 50 µg) and HEK293T (T; 50 µg) cells. *Antibodies:* Affinity purified rabbit anti-Filamin B antibody A301-724A used for WB at 0.04 µg/ml. *Detection:* Chemiluminescence with an exposure time of 30 seconds.