

# BMI1 Antibody

Rabbit Polyclonal

Antigen Affinity Purified

Protein ID NP\_005171.4

Catalog No. A301-694A

GeneID 648

Lot No. A301-694A-4



<b>APPLICATIONS</b>	WB, IP, IHC
<b>SPECIES REACTIVITY</b>	Human, Mouse
<b>PRESUMED REACTIVITY</b>	Based on 100% sequence identity, this antibody is predicted to react with Chicken, Bovine, Cat and Orangutan
<b>AMOUNT</b>	100 µl
<b>CONCENTRATION</b>	1000 µg/ml
<b>STORAGE/SHELF LIFE</b>	2 - 8° C / 1 year from date of receipt
<b>PHYSICAL STATE</b>	Liquid
<b>BUFFER</b>	Tris-citrate/phosphate buffer, pH 7 to 8 containing 0.09% Sodium Azide
<b>ISOTYPE</b>	IgG
<b>ORIGIN</b>	USA
<b>PRODUCTION PROCEDURES</b>	Antibody was affinity purified using an epitope specific to BMI1 immobilized on solid support. The epitope recognized by A301-694A maps to a region between residue 276 and 326 of human B lymphoma Mo-MLV insertion region 1 homolog using the numbering given in entry NP_005171.4 (GeneID 648).

Immunoglobulin concentration was determined by extinction coefficient: absorbance at 280 nm of 1.4 equals 1.0 mg of IgG.

**APPLICATIONS** Centrifuge tube to remove product from lid. Optimal working dilutions should be determined experimentally by the investigator. Prepare working dilution immediately before use.

Western Blot 1:2,000 - 1:10,000

Immunoprecipitation 2 - 10 µg/mg lysate

Immunohistochemistry 1:500 - 1:2,000. Epitope retrieval with citrate buffer pH 6.0 is recommended for FFPE tissue sections.

**APPLICATION NOTES** Western blot of immunoprecipitates performed using Normal Pig Serum (Cat. No. S100-020), Goat anti-Rabbit Light Chain HRP Conjugate (Cat. No. A120-113P) and 4-20% SDS-PAGE (link to IP-western blot protocol in Additional Info section below).

Western blot of lysates performed using standard western blot reagents and 4-20% SDS-PAGE.

**IHC HUMAN CONTROLS** Breast Carcinoma, Linitis Plastica Stomach Cancer, Pancreatic Islet Cell Tumor

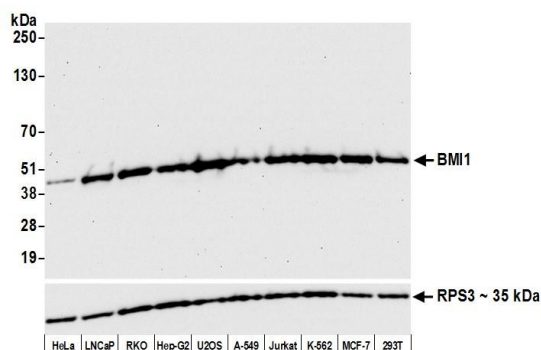
**IHC MOUSE CONTROLS** Renal Cell Carcinoma

**ADDITIONAL INFO** <https://www.bethyl.com/product/A301-694A>

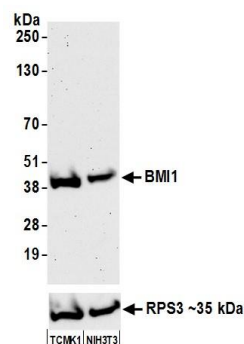
Use the link above to view SDS, a current list of citations, and other product specific information.

IP-western blot protocol: [https://www.bethyl.com/content/protocol\\_IP\\_WB](https://www.bethyl.com/content/protocol_IP_WB)

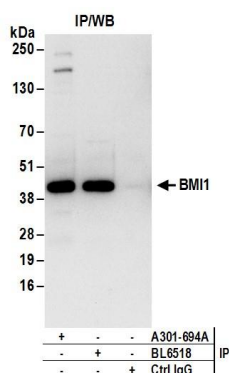
This document certifies that this product has met all of the quality control standards defined by Bethyl Laboratories, Inc.  
Eric McIntush, PhD | Chief Scientific Officer Date: June 21, 2019



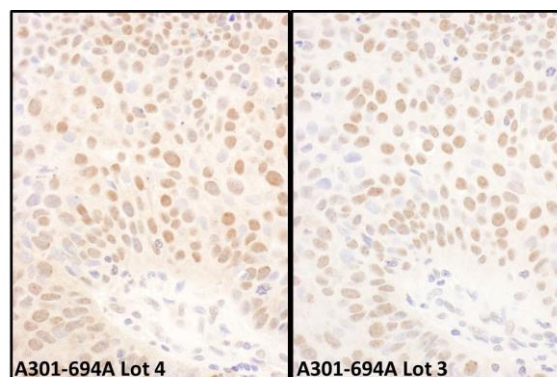
**Detection of human BMI1 by western blot.** *Samples:* Whole cell lysate (50 µg) from HeLa, LNCaP, RKO, Hep-G2, U2OS, A-549, Jurkat, K-562, MCF-7, and HEK293T cells prepared using NETN lysis buffer. *Antibody:* Affinity purified Rabbit anti-BMI1 antibody A301-694A (lot A301-694A-4) used for WB at 0.04 µg/ml. *Detection:* Chemiluminescence with an exposure time of 10 seconds. Lower Panel: Rabbit anti-RPS3 (A303-840A).



**Detection of mouse BMI1 by western blot.** *Samples:* Whole cell lysate (50 µg) from TCMK-1 and NIH 3T3 cells prepared using NETN lysis buffer. *Antibody:* Affinity purified Rabbit anti-BMI1 antibody A301-694A (lot A301-694A-4) used for WB at 0.04 µg/ml. *Detection:* Chemiluminescence with an exposure time of 75 seconds. Lower Panel: Rabbit anti-RPS3 (A303-840A).



**Detection of human BMI1 by western blot of immunoprecipitates.** *Samples:* Whole cell lysate (1 mg for IP; 20% of IP loaded) from HeLa cells. *Antibodies:* Affinity purified rabbit anti-BMI1 antibody A301-694A (lot A301-694A-4) used for IP at 6 µg/mg lysate. BMI1 was also immunoprecipitated by rabbit anti-BMI1 antibody BL6518. *Detection:* Chemiluminescence with an exposure time of 10 seconds.



**Detection of human BMI1 by immunohistochemistry.** *Sample:* FFPE section of human lung carcinoma. *Antibody:* Affinity purified rabbit anti-BMI1 (Cat. No. A301-694A Lot4 - left and Cat. No. A301-694A Lot3 - right) used at a dilution of 1:1,000 (1 µg/ml). *Detection:* DAB