

# eEF2 Kinase Antibody

Rabbit Polyclonal

Antigen Affinity Purified

Protein ID NP\_037434.1

Catalog No. A301-687A

GeneID 29904

Lot No. A301-687A-1



<b>APPLICATIONS</b>	WB, IHC
<b>SPECIES REACTIVITY</b>	Human, Mouse
<b>PRESUMED REACTIVITY</b>	Based on 100% sequence identity, this antibody is predicted to react with Rat
<b>AMOUNT</b>	100 µl
<b>CONCENTRATION</b>	1000 µg/ml
<b>STORAGE/SHELF LIFE</b>	2 - 8° C / 1 year from date of receipt
<b>PHYSICAL STATE</b>	Liquid
<b>BUFFER</b>	Tris-citrate/phosphate buffer, pH 7 to 8 containing 0.09% Sodium Azide
<b>ISOTYPE</b>	IgG
<b>ORIGIN</b>	USA
<b>PRODUCTION PROCEDURES</b>	Antibody was affinity purified using an epitope specific to eEF2 Kinase immobilized on solid support.

The epitope recognized by A301-687A maps to a region between residue 675 and 725 of human calcium/calmodulin-dependent eukaryotic elongation factor-2 kinase using the numbering given in entry NP\_037434.1 (GeneID 29904).

Immunoglobulin concentration was determined by extinction coefficient: absorbance at 280 nm of 1.4 equals 1.0 mg of IgG.

**APPLICATIONS** Centrifuge tube to remove product from lid. Optimal working dilutions should be determined experimentally by the investigator. Prepare working dilution immediately before use.

Western Blot 1:2,000 – 1:10,000

Immunoprecipitation Not recommended. Use rabbit anti-eEF2 Kinase antibody A301-686A.

Immunohistochemistry 1:500 – 1:2,000. Epitope retrieval with citrate buffer pH 6.0 is recommended for FFPE tissue sections.

**APPLICATION NOTES** Western blot of lysates performed using standard western blot reagents and 4-8% SDS-PAGE.

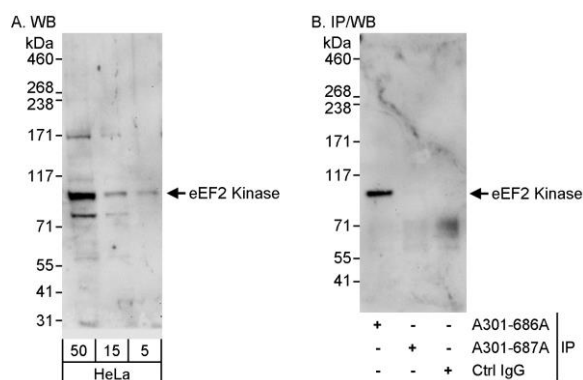
**IHC HUMAN CONTROLS** Breast Carcinoma, Colon Carcinoma, Linitis Plastica Stomach Cancer, Ovarian Carcinoma, Prostate Carcinoma, Skin Melanoma, Stomach Adenocarcinoma

**ADDITIONAL INFO** <https://www.bethyl.com/product/A301-687A>

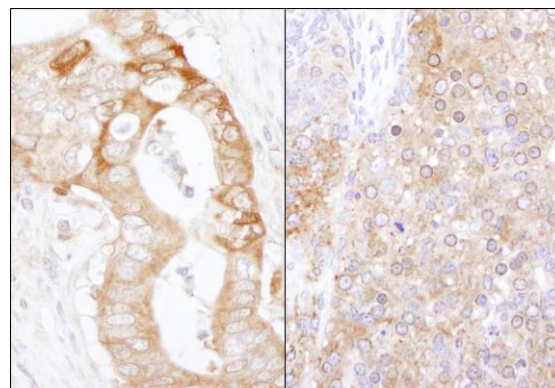
Use the link above to view SDS, a current list of citations, and other product specific information.

This document certifies that this product has met all of the quality control standards defined by Bethyl Laboratories, Inc.  
Eric McIntush, PhD | Chief Scientific Officer

Date: June 21, 2019



**Detection of human eEF2 Kinase by western blot and immunoprecipitation.** *Samples:* Whole cell lysate (5, 15 and 50 µg for WB; 1 mg for IP, 20% of IP loaded) from HeLa cells. *Antibodies:* Affinity purified rabbit anti-eEF2 Kinase antibody A301-687A used for WB at 0.4 µg/ml (A) and 1 µg/ml (B) and used for IP at 3 µg/mg lysate. eEF2 Kinase was successfully immunoprecipitated by rabbit anti-eEF2 Kinase antibody A301-686A, which recognizes an upstream epitope. *Detection:* Chemiluminescence with exposure times of 30 seconds (A) and 10 seconds (B).



**Detection of human and mouse eEF2 Kinase by immunohistochemistry.** *Sample:* FFPE section of human stomach carcinoma (left) and mouse teratoma (right). *Antibody:* Affinity purified rabbit anti-eEF2 Kinase (Cat. No. A301-687A) used at a dilution of 1:1,000 (1 µg/ml). *Detection:* DAB