

# CrkRS Antibody

Rabbit Polyclonal

Antigen Affinity Purified

Protein ID NP\_057591.2

Catalog No. A301-679A

GeneID 51755

Lot No. A301-679A-3



<b>APPLICATIONS</b>	WB, IP
<b>SPECIES REACTIVITY</b>	Human
<b>PRESUMED REACTIVITY</b>	Based on 100% sequence identity, this antibody is predicted to react with Mouse and Rat
<b>AMOUNT</b>	100 µl
<b>CONCENTRATION</b>	1000 µg/ml
<b>STORAGE/SHELF LIFE</b>	2 - 8° C / 1 year from date of receipt
<b>PHYSICAL STATE</b>	Liquid
<b>BUFFER</b>	Tris-citrate/phosphate buffer, pH 7 to 8 containing 0.09% Sodium Azide
<b>ISOTYPE</b>	IgG
<b>ORIGIN</b>	USA
<b>PRODUCTION PROCEDURES</b>	Antibody was affinity purified using an epitope specific to CrkRS immobilized on solid support.

The epitope recognized by A301-679A maps to a region between residue 1 and 50 of human cell division cycle 2 (CDC2)-related kinase arginine/serine-rich using the numbering given in entry NP\_057591.2 (GeneID 51755).

Immunoglobulin concentration was determined by extinction coefficient: absorbance at 280 nm of 1.4 equals 1.0 mg of IgG.

**APPLICATIONS** Centrifuge tube to remove product from lid. Optimal working dilutions should be determined experimentally by the investigator. Prepare working dilution immediately before use.

Western Blot 1:2,000 - 1:10,000

Immunoprecipitation 2 - 10 µg/mg lysate

**APPLICATION NOTES** Western blot of immunoprecipitates performed using Normal Pig Serum (Cat. No. S100-020), Goat anti-Rabbit Light Chain HRP Conjugate (Cat. No. A120-113P) and 4-8% SDS-PAGE (link to IP-western blot protocol in Additional Info section below).

Western blot of lysates performed using standard western blot reagents and 4-8% SDS-PAGE.

## ADDITIONAL INFO

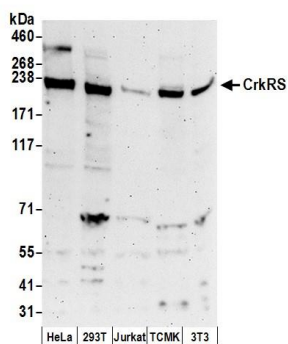
<https://www.bethyl.com/product/A301-679A>

Use the link above to view SDS, a current list of citations, and other product specific information.

IP-western blot protocol: [https://www.bethyl.com/content/protocol\\_IP\\_WB](https://www.bethyl.com/content/protocol_IP_WB)

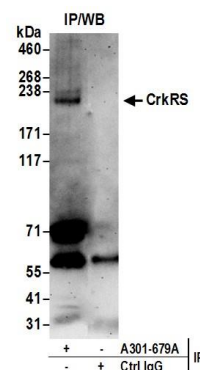
This document certifies that this product has met all of the quality control standards defined by Bethyl Laboratories, Inc.  
Eric McIntush, PhD | Chief Scientific Officer

Date: June 21, 2019



#### Detection of human and mouse CrkRS by western blot.

**Samples:** Whole cell lysate (50 µg) from HeLa, HEK293T, Jurkat, mouse TCMK-1, and mouse NIH 3T3 cells prepared using NETN lysis buffer. **Antibody:** Affinity purified rabbit anti-CrkRS antibody A301-679A (lot A301-679A-3) used for WB at 0.1 µg/ml. **Detection:** Chemiluminescence with an exposure time of 3 minutes.



#### Detection of human CrkRS by western blot of immunoprecipitates.

**Samples:** Whole cell lysate (0.5 or 1.0 mg per IP reaction; 20% of IP loaded) from HEK293T cells prepared using NETN lysis buffer. **Antibody:** Affinity purified rabbit anti-CrkRS antibody A301-679A (lot A301-679A-3) used for IP at 6 µg per reaction. For blotting immunoprecipitated CrkRS, A301-679A was used at 1 µg/ml. **Detection:** Chemiluminescence with an exposure time of 3 minutes.