

Cyclin L2 Antibody

Rabbit Polyclonal

Antigen Affinity Purified

Catalog No. A301-677A

Lot No. A301-677A-2

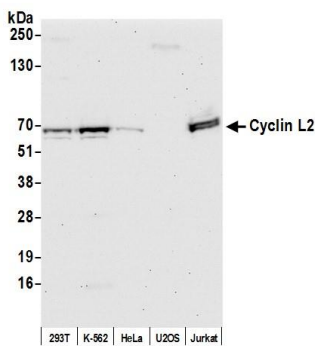
Protein ID NP_112199.2

GeneID 81669

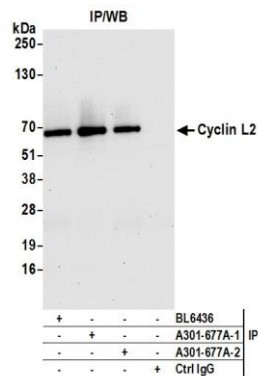


APPLICATIONS	WB, IP
SPECIES REACTIVITY	Human
AMOUNT	100 µl
CONCENTRATION	200 µg/ml
STORAGE/SHELF LIFE	2 – 8° C / 1 year from date of receipt
PHYSICAL STATE	Liquid
BUFFER	Tris-buffered Saline containing 0.1% BSA and 0.09% Sodium Azide
ISOTYPE	IgG
ORIGIN	USA
PRODUCTION PROCEDURES	Antibody was affinity purified using an epitope specific to Cyclin L2 immobilized on solid support. The epitope recognized by A301-677A maps to a region between residue 470 and 520 of human cyclin L2 using the numbering given in entry NP_112199.2 (GeneID 81669). Immunoglobulin concentration was determined by extinction coefficient: absorbance at 280 nm of 1.4 equals 1.0 mg of IgG.
APPLICATIONS	Centrifuge tube to remove product from lid. Optimal working dilutions should be determined experimentally by the investigator. Prepare working dilution immediately before use. Western Blot 1:2,000 – 1:10,000 Immunoprecipitation 2 – 10 µg/mg lysate
APPLICATION NOTES	Western blot of immunoprecipitates performed using Normal Pig Serum (Cat. No. S100-020), Goat anti-Rabbit Light Chain HRP Conjugate (Cat. No. A120-113P) and 4-20% SDS-PAGE (link to IP-western blot protocol in Additional Info section below). Western blot of lysates performed using standard western blot reagents and 4-20% SDS-PAGE.
ADDITIONAL INFO	https://www.bethyl.com/product/A301-677A Use the link above to view SDS, a current list of citations, and other product specific information. IP-western blot protocol: https://www.bethyl.com/content/protocol_IP_WB

This document certifies that this product has met all of the quality control standards defined by Bethyl Laboratories, Inc.
Eric McIntush, PhD | Chief Scientific Officer Date: June 21, 2019



Detection of human Cyclin L2 by western blot. *Samples:* Whole cell lysate (50 µg) from HEK293T, K-562, HeLa, U2OS, and Jurkat cells prepared using NETN lysis buffer. *Antibody:* Affinity purified Rabbit anti-Cyclin L2 antibody A301-677A (lot A301-677A-2) used for WB at 0.04 µg/ml. *Detection:* Chemiluminescence with an exposure time of 30 seconds.



Detection of human Cyclin L2 by western blot of immunoprecipitates. *Samples:* Whole cell lysate (1.0 mg per IP reaction; 20% of IP loaded) from HeLa cells prepared using NETN lysis buffer. *Antibodies:* Affinity purified Rabbit anti-Cyclin L2 antibody A301-677A (lot A301-677A-2) used for IP at 6 µg per reaction. Cyclin L2 was also immunoprecipitated by a previous lot of this antibody (lot A301-677A-1) and rabbit anti-Cyclin L2 antibody BL6436. For blotting immunoprecipitated Cyclin L2, A301-677A was used at 0.04 µg/ml. *Detection:* Chemiluminescence with an exposure time of 10 seconds.