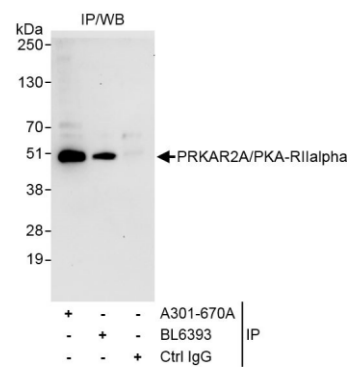
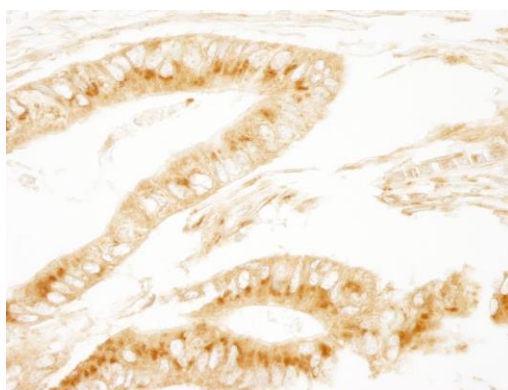


Detection of human PRKAR2A/PKA-R11alpha by western blot. *Samples:* Whole cell lysate from HeLa (5, 15 and 50 μ g) and HEK293T (T; 50 μ g) cells. *Antibodies:* Affinity purified rabbit anti-PRKAR2A/PKA-R11alpha antibody A301-670A (lot A301-670A-1) used for WB at 0.04 μ g/ml. *Detection:* Chemiluminescence with exposure time of 30 seconds.



Detection of human PRKAR2A/PKA-R11alpha by western blot of immunoprecipitates *Samples:* Whole cell lysate (1 mg for IP, 20% of IP loaded) from HeLa cells. *Antibodies:* Affinity purified rabbit anti-PRKAR2A/PKA-R11alpha antibody A301-670A (lot A301-670A-1) used for IP at 3 μ g/mg lysate. PRKAR2A/PKA-R11alpha was also immunoprecipitated by rabbit anti-PRKAR2A/PKA-R11alpha antibody BL6393, which recognizes a downstream epitope. For blotting immunoprecipitated PRKAR2A/PKA-R11alpha, A301-670A was used at 1.0 μ g/ml. *Detection:* Chemiluminescence with exposure time of 30 seconds.



Detection of human PRKAR2A/PKA-R11alpha by immunohistochemistry. *Sample:* FFPE section of human colon carcinoma. *Antibody:* Affinity purified rabbit anti-PRKAR2A/PKA-R11alpha (Cat. No. A301-670A lot 1) used at a dilution of 1:200 (1 μ g/ml). *Detection:* DAB