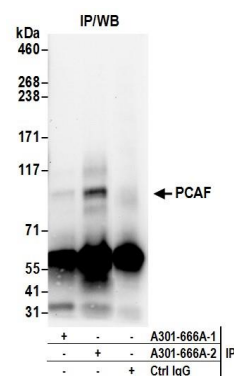


**Detection of human and mouse PCAF by western blot.**

*Samples:* Whole cell lysate (50 µg) from HeLa, HEK293T, and mouse NIH 3T3 cells prepared using NETN lysis buffer.

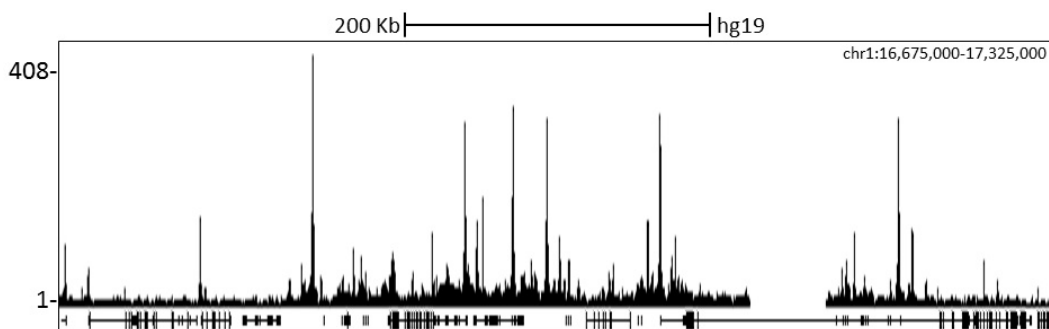
*Antibody:* Affinity purified rabbit anti-PCAF antibody A301-666A (lot A301-666A-2) used for WB at 0.1 µg/ml.

*Detection:* Chemiluminescence with an exposure time of 3 minutes.



**Detection of human PCAF by western blot of immunoprecipitates.**

*Samples:* Whole cell lysate (0.5 or 1.0 mg per IP reaction; 20% of IP loaded) from HeLa cells prepared using NETN lysis buffer. *Antibodies:* Affinity purified rabbit anti-PCAF antibody A301-666A (lot A301-666A-2) used for IP at 6 µg per reaction. PCAF was also immunoprecipitated by a previous lot of this antibody (lot A301-666A-1). For blotting immunoprecipitated PCAF, A301-666A was used at 1 µg/ml. *Detection:* Chemiluminescence with an exposure time of 30 seconds.



**Localization of PCAF Binding Sites by ChIP-seq.** Chromatin from K562 cells was immunoprecipitated with anti-PCAF antibody A301-666A and analyzed by DNA sequencing. The figure illustrates the peak distribution of PCAF binding within a 650 Kb region of chromosome 1 as detected using anti-PCAF antibody A301-666A. ChIP-seq validation performed by Diogenode, Denville, NJ.