

ANKRD17 Antibody

Rabbit Polyclonal

Antigen Affinity Purified

Protein ID NP_115593.3

Catalog No. A301-664A

GeneID 26057

Lot No. A301-664A-1



APPLICATIONS	IP, IHC
SPECIES REACTIVITY	Human
PRESUMED REACTIVITY	Based on 100% sequence identity, this antibody is predicted to react with Mouse
AMOUNT	100 µl
CONCENTRATION	1000 µg/ml
STORAGE/SHELF LIFE	2 - 8° C / 1 year from date of receipt
PHYSICAL STATE	Liquid
BUFFER	Tris-citrate/phosphate buffer, pH 7 to 8 containing 0.09% Sodium Azide
ISOTYPE	IgG
ORIGIN	USA
PRODUCTION PROCEDURES	Antibody was affinity purified using an epitope specific to ANKRD17 immobilized on solid support.

The epitope recognized by A301-664A maps to a region between residue 1550 and 1600 of human ankyrin repeat domain 17 using the numbering given in entry NP_115593.3 (GeneID 26057).

Immunoglobulin concentration was determined by extinction coefficient: absorbance at 280 nm of 1.4 equals 1.0 mg of IgG.

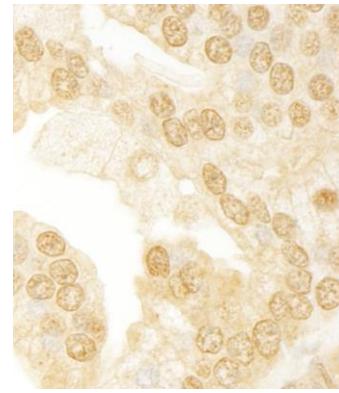
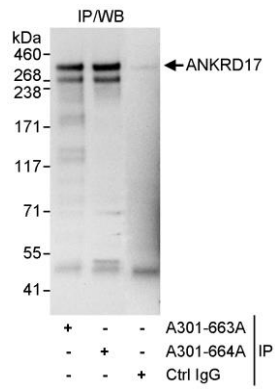
APPLICATIONS	Centrifuge tube to remove product from lid. Optimal working dilutions should be determined experimentally by the investigator. Prepare working dilution immediately before use.
Western Blot	Not recommended. Use rabbit anti-ANKRD17 antibody A301-663A.
Immunoprecipitation	2 - 5 µg/mg lysate
Immunohistochemistry	1:500 - 1:2,000. Epitope retrieval with citrate buffer pH 6.0 is recommended for FFPE tissue sections.

APPLICATION NOTES Western blot of immunoprecipitates performed using Normal Pig Serum (Cat. No. S100-020), Goat anti-Rabbit Light Chain HRP Conjugate (Cat. No. A120-113P) and 4-8% SDS-PAGE (link to IP-western blot protocol in Additional Info section below).

IHC HUMAN CONTROLS Breast Carcinoma, Colon Carcinoma, Prostate Carcinoma, Skin Basal Cell Carcinoma, Testicular Seminoma

ADDITIONAL INFO <https://www.bethyl.com/product/A301-664A>
Use the link above to view SDS, a current list of citations, and other product specific information.
IP-western blot protocol: https://www.bethyl.com/content/protocol_IP_WB

This document certifies that this product has met all of the quality control standards defined by Bethyl Laboratories, Inc.
Eric McIntush, PhD | Chief Scientific Officer Date: June 21, 2019



Detection of human ANKRD17 by western blot of immunoprecipitates. *Samples:* Whole cell lysate (1 mg for IP, 20% of IP loaded) from HeLa cells. *Antibodies:* Affinity purified rabbit anti-ANKRD17 antibody A301-664A used for IP at 3 µg/mg lysate. ANKRD17 was also immunoprecipitated by rabbit anti-ANKRD17 antibody A301-663A, which recognizes an upstream epitope. For blotting immunoprecipitated ANKRD17, A301-663A was used at 1 µg/ml. *Detection:* Chemiluminescence with an exposure time 10 seconds.

Detection of human ANKRD17 by immunohistochemistry. *Sample:* FFPE section of human prostate carcinoma. *Antibody:* Affinity purified rabbit anti-ANKRD17 (Cat. No. A301-664A) used at a dilution of 1:1,000 (1 µg/ml). *Detection:* DAB