

# ANKRD17 Antibody

Rabbit Polyclonal

Antigen Affinity Purified

Protein ID NP\_115593.3

Catalog No. A301-663A

GeneID 26057

Lot No. A301-663A-2



<b>APPLICATIONS</b>	WB, IP
<b>SPECIES REACTIVITY</b>	Human
<b>PRESUMED REACTIVITY</b>	Based on 100% sequence identity, this antibody is predicted to react with Mouse
<b>AMOUNT</b>	100 µl
<b>CONCENTRATION</b>	1000 µg/ml
<b>STORAGE/SHELF LIFE</b>	2 - 8° C / 1 year from date of receipt
<b>PHYSICAL STATE</b>	Liquid
<b>BUFFER</b>	Tris-citrate/phosphate buffer, pH 7 to 8 containing 0.09% Sodium Azide
<b>ISOTYPE</b>	IgG
<b>ORIGIN</b>	USA
<b>PRODUCTION PROCEDURES</b>	Antibody was affinity purified using an epitope specific to ANKRD17 immobilized on solid support.

The epitope recognized by A301-663A maps to a region between residue 775 and 825 of human ankyrin repeat domain 17 using the numbering given in entry NP\_115593.3 (GeneID 26057).

Immunoglobulin concentration was determined by extinction coefficient: absorbance at 280 nm of 1.4 equals 1.0 mg of IgG.

**APPLICATIONS** Centrifuge tube to remove product from lid. Optimal working dilutions should be determined experimentally by the investigator. Prepare working dilution immediately before use.

Western Blot 1:2,000 - 1:10,000

Immunoprecipitation 2 - 5 µg/mg lysate

**APPLICATION NOTES** Western blot of immunoprecipitates performed using Normal Pig Serum (Cat. No. S100-020), Goat anti-Rabbit Light Chain HRP Conjugate (Cat. No. A120-113P) and 4-8% SDS-PAGE (link to IP-western blot protocol in Additional Info section below).

Western blot of lysates performed using standard western blot reagents and 4-8% SDS-PAGE.

## ADDITIONAL INFO

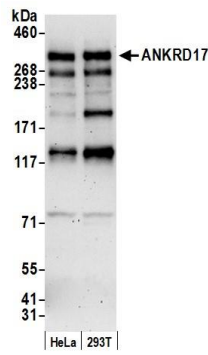
<https://www.bethyl.com/product/A301-663A>

Use the link above to view SDS, a current list of citations, and other product specific information.

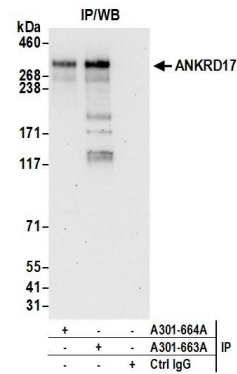
IP-western blot protocol: [https://www.bethyl.com/content/protocol\\_IP\\_WB](https://www.bethyl.com/content/protocol_IP_WB)

This document certifies that this product has met all of the quality control standards defined by Bethyl Laboratories, Inc.  
Eric McIntush, PhD | Chief Scientific Officer

Date: June 21, 2019



**Detection of human ANKRD17 by western blot.** *Samples:* Whole cell lysate (15 µg) from HeLa and HEK293T cells prepared using NETN lysis buffer. *Antibody:* Affinity purified rabbit anti-ANKRD17 antibody A301-663A (lot A301-663A-2) used for WB at 0.1 µg/ml. *Detection:* Chemiluminescence with an exposure time of 3 minutes.



**Detection of human ANKRD17 by western blot of immunoprecipitates.** *Samples:* Whole cell lysate (1.0 mg per IP reaction; 20% of IP loaded) from HeLa cells prepared using NETN lysis buffer. *Antibodies:* Affinity purified rabbit anti-ANKRD17 antibody A301-663A (lot A301-663A-2) used for IP at 3 µg per reaction. ANKRD17 was also immunoprecipitated by rabbit anti-ANKRD17 antibody A301-664A. For blotting immunoprecipitated ANKRD17, A301-663A was used at 0.4 µg/ml. *Detection:* Chemiluminescence with an exposure time of 30 seconds.