

cAbl Antibody

Rabbit Polyclonal

Antigen Affinity Purified

Protein ID NP_005148.2

Catalog No. A301-661A

GeneID 25

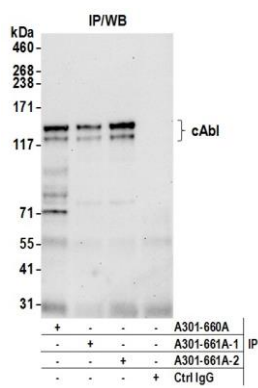
Lot No. A301-661A-2



APPLICATIONS	IP, IHC, ICC								
SPECIES REACTIVITY	Human								
AMOUNT	100 µl								
CONCENTRATION	1000 µg/ml								
STORAGE/SHELF LIFE	2 – 8° C / 1 year from date of receipt								
PHYSICAL STATE	Liquid								
BUFFER	Tris-citrate/phosphate buffer, pH 7 to 8 containing 0.09% Sodium Azide								
ISOTYPE	IgG								
ORIGIN	USA								
PRODUCTION PROCEDURES	<p>Antibody was affinity purified using an epitope specific to cAbl immobilized on solid support.</p> <p>The epitope recognized by A301-661A maps to a region between residue 850 and 900 of human v-abl Abelson murine leukemia viral oncogene homolog 1 using the numbering given in entry NP_005148.2 (GeneID 25).</p> <p>Immunoglobulin concentration was determined by extinction coefficient: absorbance at 280 nm of 1.4 equals 1.0 mg of IgG.</p>								
APPLICATIONS	<p>Centrifuge tube to remove product from lid. Optimal working dilutions should be determined experimentally by the investigator. Prepare working dilution immediately before use.</p> <table><tr><td>Western Blot</td><td>Not recommended. Use rabbit anti-cAbl antibody A301-660A.</td></tr><tr><td>Immunoprecipitation</td><td>2 – 10 µg/mg lysate</td></tr><tr><td>Immunohistochemistry</td><td>1:1,000 to 1:5,000. Epitope retrieval with citrate buffer pH6.0 is recommended for FFPE tissue sections.</td></tr><tr><td>Immunocytochemistry</td><td>1:1,000 – 1:5,000. Epitope retrieval with citrate buffer pH 6.0 is recommended for FFPE cell sections. For cytospin preparations of formaldehyde fixed cells permeabilization with Triton-X 100 is recommended.</td></tr></table>	Western Blot	Not recommended. Use rabbit anti-cAbl antibody A301-660A.	Immunoprecipitation	2 – 10 µg/mg lysate	Immunohistochemistry	1:1,000 to 1:5,000. Epitope retrieval with citrate buffer pH6.0 is recommended for FFPE tissue sections.	Immunocytochemistry	1:1,000 – 1:5,000. Epitope retrieval with citrate buffer pH 6.0 is recommended for FFPE cell sections. For cytospin preparations of formaldehyde fixed cells permeabilization with Triton-X 100 is recommended.
Western Blot	Not recommended. Use rabbit anti-cAbl antibody A301-660A.								
Immunoprecipitation	2 – 10 µg/mg lysate								
Immunohistochemistry	1:1,000 to 1:5,000. Epitope retrieval with citrate buffer pH6.0 is recommended for FFPE tissue sections.								
Immunocytochemistry	1:1,000 – 1:5,000. Epitope retrieval with citrate buffer pH 6.0 is recommended for FFPE cell sections. For cytospin preparations of formaldehyde fixed cells permeabilization with Triton-X 100 is recommended.								
APPLICATION NOTES	Western blot of immunoprecipitates performed using Normal Pig Serum (Cat. No. S100-020), Goat anti-Rabbit Light Chain HRP Conjugate (Cat. No. A120-113P) and 4-8% SDS-PAGE (link to IP-western blot protocol in Additional Info section below).								
IHC HUMAN CONTROLS	Breast Carcinoma, Ovarian Carcinoma, Prostate Carcinoma								
ADDITIONAL INFO	<p>https://www.bethyl.com/product/A301-661A</p> <p>Use the link above to view SDS, a current list of citations, and other product specific information.</p> <p>IP-western blot protocol: https://www.bethyl.com/content/protocol_IP_WB</p>								

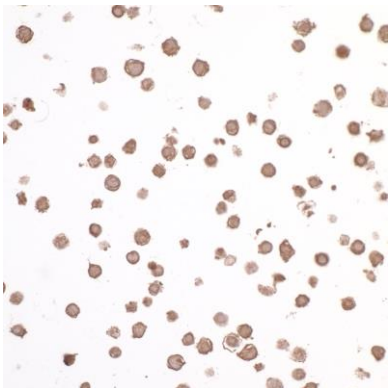
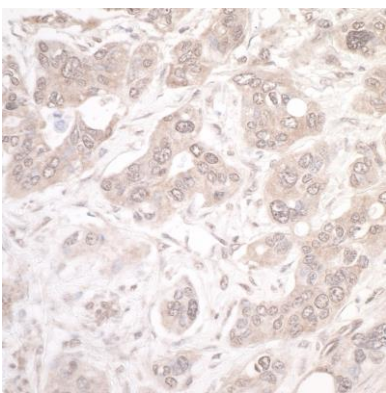
This document certifies that this product has met all of the quality control standards defined by Bethyl Laboratories, Inc.
Eric McIntush, PhD | Chief Scientific Officer

Date: June 24, 2019



Detection of human cAbl by western blot of immunoprecipitates. *Samples:* Whole cell lysate (1.0 mg per IP reaction; 20% of IP loaded) from Jurkat cells prepared using NETN lysis buffer. *Antibodies:* Affinity purified rabbit anti-cAbl antibody A301-661A (lot A301-661A-2) used for IP at 6 µg per reaction. cAbl was also immunoprecipitated by a previous lot of this antibody (lot A301-661A-1) and rabbit anti-cAbl antibody A301-660A. For blotting immunoprecipitated cAbl, A301-660A was used at 0.2 µg/ml. *Detection:* Chemiluminescence with an exposure time of 75 seconds.

Detection of human cAbl by immunohistochemistry. *Sample:* FFPE section of human ovarian carcinoma. *Antibody:* Affinity purified rabbit anti-cAbl (Cat. No. A301-661A lot 2) used at a dilution of 1:2,500 (0.4µg/ml). *Detection:* DAB



Detection of human cAbl by immunocytochemistry. *Sample:* FFPE K-562 cells (contains the chromosomal translocation, t(9:22) that creates the BCR/ABL fusion gene). *Antibody:* Affinity purified rabbit anti-cAbl (Cat. No. A301-661A lot 2) used at a dilution of 1:2,500 (0.4µg/ml). *Detection:* DAB