

CEP290 Antibody

Rabbit Polyclonal

Antigen Affinity Purified

Protein ID NP_079390.3

Catalog No. A301-659A

GeneID 80184

Lot No. A301-659A-2



APPLICATIONS	WB, IP, ICC-IF
SPECIES REACTIVITY	Human
AMOUNT	100 µl
CONCENTRATION	1000 µg/ml
STORAGE/SHELF LIFE	2 - 8° C / 1 year from date of receipt
PHYSICAL STATE	Liquid
BUFFER	Tris-citrate/phosphate buffer, pH 7 to 8 containing 0.09% Sodium Azide
ISOTYPE	IgG
ORIGIN	USA
PRODUCTION PROCEDURES	Antibody was affinity purified using an epitope specific to CEP290 immobilized on solid support.

The epitope recognized by A301-659A maps to a region between residue 2429 and 2479 of human centrosomal protein 290kDa using the numbering given in entry NP_079390.3 (GeneID 80184).

Immunoglobulin concentration was determined by extinction coefficient: absorbance at 280 nm of 1.4 equals 1.0 mg of IgG.

APPLICATIONS Centrifuge tube to remove product from lid. Optimal working dilutions should be determined experimentally by the investigator. Prepare working dilution immediately before use.

Western Blot 1:2,000 - 1:10,000

Immunoprecipitation 2 - 5 µg/mg lysate

Immunofluorescence (ICC) 1:250 - 1:1,000. Formaldehyde fixation is recommended. Permeabilization with Triton-X 100 is recommended for formaldehyde-fixed cells.

APPLICATION NOTES Western blot of immunoprecipitates performed using Normal Pig Serum (Cat. No. S100-020), Goat anti-Rabbit Light Chain HRP Conjugate (Cat. No. A120-113P) and 4-8% SDS-PAGE (link to IP-western blot protocol in Additional Info section below).

Western blot of lysates performed using standard western blot reagents and 4-8% SDS-PAGE.

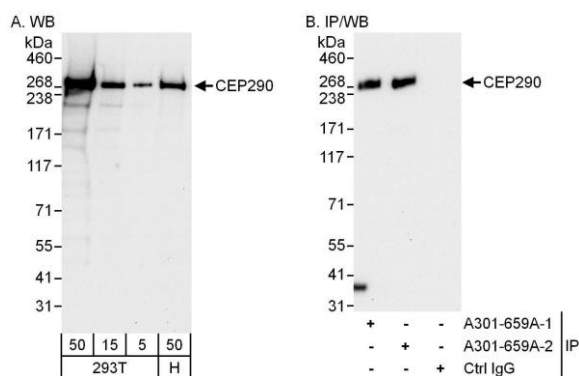
IHC HUMAN CONTROLS HeLa Cells

ADDITIONAL INFO <https://www.bethyl.com/product/A301-659A>

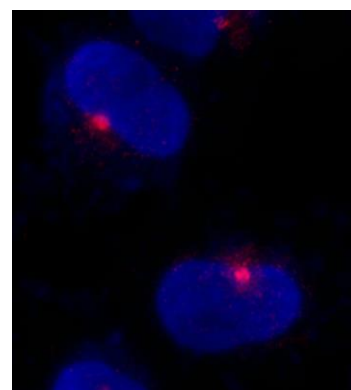
Use the link above to view SDS, a current list of citations, and other product specific information.

IP-western blot protocol: https://www.bethyl.com/content/protocol_IP_WB

This document certifies that this product has met all of the quality control standards defined by Bethyl Laboratories, Inc.
Eric McIntush, PhD | Chief Scientific Officer Date: June 21, 2019



Detection of human CEP290 by western blot and immunoprecipitation. *Samples:* Whole cell lysate from HeLa (5, 15 and 50 μ g for WB; 1 mg for IP, 20% of IP loaded) and HEK293T (T; 50 μ g) cells. *Antibodies:* Affinity purified rabbit anti-CEP290 antibody A301-659A used for WB at 0.1 μ g/ml (A) and 1 μ g/ml (B) and used for IP at 3 μ g/mg lysate. CEP290 was also immunoprecipitated by rabbit anti-CEP290 antibody BL6289, which recognizes an upstream epitope. *Detection:* Chemiluminescence with exposure times of 30 seconds (A) and 10 second (B).



Detection of human CEP290 by immunocytochemistry. *Sample:* NBF-fixed asynchronous HeLa cells. *Antibody:* Affinity purified rabbit anti-CEP290 (Cat. No. A301-659A) used at a dilution of 1:500 (2 μ g/ml). *Detection:* Red-fluorescent goat anti-rabbit IgG cross-adsorbed Antibody DyLight 594 used at a dilution of 1:100.