

# B-Myb Antibody

Rabbit Polyclonal

Antigen Affinity Purified

Protein ID NP\_002457.1

Catalog No. A301-656A

GeneID 4605

Lot No. A301-656A-1



<b>APPLICATIONS</b>	IP
<b>SPECIES REACTIVITY</b>	Human
<b>AMOUNT</b>	100 µl
<b>CONCENTRATION</b>	1000 µg/ml
<b>STORAGE/SHELF LIFE</b>	2 - 8° C / 1 year from date of receipt
<b>PHYSICAL STATE</b>	Liquid
<b>BUFFER</b>	Tris-citrate/phosphate buffer, pH 7 to 8 containing 0.09% Sodium Azide
<b>ISOTYPE</b>	IgG
<b>ORIGIN</b>	USA
<b>PRODUCTION PROCEDURES</b>	Antibody was affinity purified using an epitope specific to B-Myb immobilized on solid support.  The epitope recognized by A301-656A maps to a region between residue 650 and 700 of human MYB-related protein B using the numbering given in entry NP_002457.1 (GeneID 4605).  Immunoglobulin concentration was determined by extinction coefficient: absorbance at 280 nm of 1.4 equals 1.0 mg of IgG.

**APPLICATIONS** Centrifuge tube to remove product from lid. Optimal working dilutions should be determined experimentally by the investigator. Prepare working dilution immediately before use.

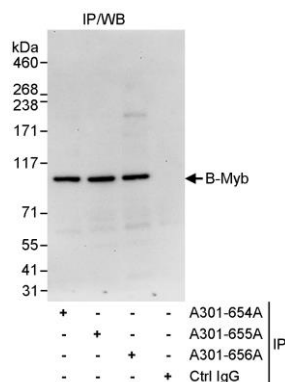
Western Blot Not recommended. A301-656A has not performed satisfactorily when used for WB of B-Myb in crude preparations (e.g. whole cell lysate). This antibody can be used for WB of enriched (e.g. immunoprecipitated) sources of B-Myb.

Immunoprecipitation 2 - 5 µg/mg lysate

**APPLICATION NOTES** Western blot of immunoprecipitates performed using Normal Pig Serum (Cat. No. S100-020), Goat anti-Rabbit Light Chain HRP Conjugate (Cat. No. A120-113P) and 4-8% SDS-PAGE (link to IP-western blot protocol in Additional Info section below).

**ADDITIONAL INFO** <https://www.bethyl.com/product/A301-656A>  
Use the link above to view SDS, a current list of citations, and other product specific information.  
IP-western blot protocol: [https://www.bethyl.com/content/protocol\\_IP\\_WB](https://www.bethyl.com/content/protocol_IP_WB)

This document certifies that this product has met all of the quality control standards defined by Bethyl Laboratories, Inc.  
Eric McIntush, PhD | Chief Scientific Officer Date: June 21, 2019



**Detection of human B-Myb by western blot of immunoprecipitates.** *Samples:* Whole cell lysate (1 mg for IP, 20% of IP loaded) from HeLa cells. *Antibodies:* Affinity purified rabbit anti-B-Myb antibody A301-656A used for IP at 3  $\mu\text{g}/\text{mg}$  lysate. B-Myb was also immunoprecipitated by rabbit anti-B-Myb antibodies A301-654A and A301-655A, which recognize upstream epitopes. For blotting immunoprecipitated B-Myb, A301-656A was used at 1  $\mu\text{g}/\text{ml}$ . *Detection:* Chemiluminescence with an exposure time of 30 seconds.