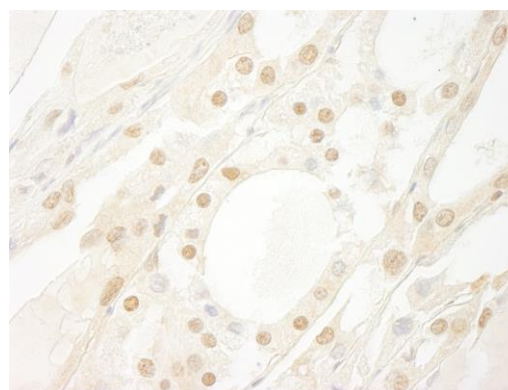


**Detection of human B-Myb by western blot of immunoprecipitates.** *Samples:* Whole cell lysate (1 mg for IP, 20% of IP loaded) from HeLa cells. *Antibodies:* Affinity purified rabbit anti-B-Myb antibody A301-655A used for IP at 3  $\mu\text{g}/\text{mg}$  lysate. B-Myb was also immunoprecipitated by rabbit anti-B-Myb antibodies A301-654A and A301-656A, which recognize other epitopes. For blotting immunoprecipitated B-Myb, A301-655A was used at 1  $\mu\text{g}/\text{ml}$ . *Detection:* Chemiluminescence with an exposure time of 30 seconds.



**Detection of human B-Myb by immunohistochemistry.** *Sample:* FFPE section of human thyroid carcinoma. *Antibody:* Affinity purified rabbit anti-B-Myb (Cat. No. A301-655A) used at a dilution of 1:1,000 (1  $\mu\text{g}/\text{ml}$ ). *Detection:* DAB