

# B-Myb Antibody

Rabbit Polyclonal

Antigen Affinity Purified Protein ID NP\_002457.1  
Catalog No. A301-654A GeneID 4605  
Lot No. A301-654A-2



**APPLICATIONS** IP, IHC  
**SPECIES REACTIVITY** Human  
**AMOUNT** 100 µl  
**CONCENTRATION** 1000 µg/ml  
**STORAGE/SHELF LIFE** 2 – 8° C / 1 year from date of receipt  
**PHYSICAL STATE** Liquid  
**BUFFER** Tris-citrate/phosphate buffer, pH 7 to 8 containing 0.09% Sodium Azide  
**ISOTYPE** IgG  
**ORIGIN** USA  
**PRODUCTION PROCEDURES** Antibody was affinity purified using an epitope specific to B-Myb immobilized on solid support.

The epitope recognized by A301-654A maps to a region between residue 250 and 300 of human MYB-related protein B using the numbering given in entry NP\_002457.1 (GeneID 4605).

Immunoglobulin concentration was determined by extinction coefficient: absorbance at 280 nm of 1.4 equals 1.0 mg of IgG.

**APPLICATIONS** Centrifuge tube to remove product from lid. Optimal working dilutions should be determined experimentally by the investigator. Prepare working dilution immediately before use.

Western Blot Not recommended. A301-654A has not performed satisfactorily when used for WB of B-Myb in crude preparations (e.g. whole cell lysate). This antibody can be used for WB of enriched (e.g. immunoprecipitated) sources of B-Myb.

Immunoprecipitation 2 – 10 µg/mg lysate

Immunohistochemistry 1:500 to 1:2,000. Epitope retrieval with citrate buffer pH6.0 is recommended for FFPE tissue sections.

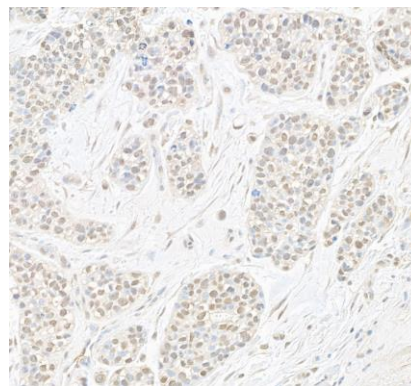
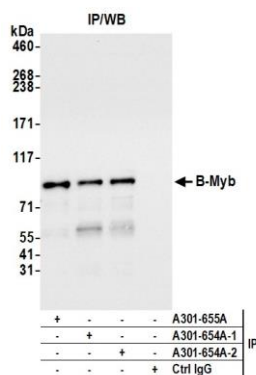
**IHC HUMAN CONTROLS** Anaplastic Thyroid Carcinoma, Breast Carcinoma

**ADDITIONAL INFO** <https://www.bethyl.com/product/A301-654A>

Use the link above to view SDS, a current list of citations, and other product specific information.

IP-western blot protocol: [https://www.bethyl.com/content/protocol\\_IP\\_WB](https://www.bethyl.com/content/protocol_IP_WB)

This document certifies that this product has met all of the quality control standards defined by Bethyl Laboratories, Inc.  
Brian McWilliams, PhD Date: November 13, 2020



**Detection of human B-Myb by western blot of immunoprecipitates.** *Samples:* Whole cell lysate (1.0 mg per IP reaction; 20% of IP loaded) from HEK293T cells prepared using NETN lysis buffer. *Antibodies:* Affinity purified rabbit anti-B-Myb antibody A301-654A (lot A301-654A-2) used for IP at 6  $\mu$ g per reaction. B-Myb was also immunoprecipitated by a previous lot of this antibody (lot A301-654A-1) and rabbit anti-B-Myb antibody A301-655A. For blotting immunoprecipitated B-Myb, A301-654A was used at 0.04  $\mu$ g/ml. *Detection:* Chemiluminescence with an exposure time of 3 seconds.

**Detection of human B-Myb by immunohistochemistry.** *Sample:* FFPE section of human breast carcinoma. *Antibody:* Affinity purified rabbit anti-B-Myb (Cat. No. A301-654A Lot 2) used at a dilution of 1:1,000 (1  $\mu$ g/ml). *Detection:* DAB