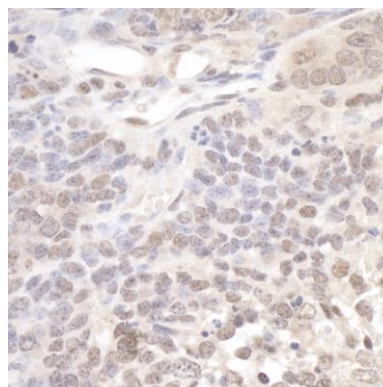


Detection of human Pol Lambda by western blot of immunoprecipitates. *Samples:* Whole cell lysate (0.5 or 1.0 mg per IP reaction; 20% of IP loaded) from HeLa cells prepared using NETN lysis buffer. *Antibodies:* Affinity purified rabbit anti-Pol Lambda antibody A301-641A (lot A301-641A-2) used for IP at 6 µg per reaction. Pol Lambda was also immunoprecipitated by rabbit anti-Pol Lambda antibody A301-640A. For blotting immunoprecipitated Pol Lambda, A301-640A was used at 1 µg/ml. *Detection:* Chemiluminescence with an exposure time of 3 minutes.

Detection of human Pol Lambda by immunohistochemistry. *Sample:* FFPE section of human breast carcinoma. *Antibody:* Affinity purified rabbit anti-Pol Lambda (Cat. No. A301-641A Lot2) used at a dilution of 1:1,000 (1 µg/ml). *Detection:* DAB



Detection of mouse Pol Lambda by immunohistochemistry. *Sample:* FFPE section of mouse teratoma. *Antibody:* Affinity purified rabbit anti-Pol Lambda (Cat. No. A301-641A Lot2) used at a dilution of 1:1,000 (1 µg/ml). *Detection:* DAB