

# Pol Lambda Antibody

Rabbit Polyclonal

Antigen Affinity Purified

Protein ID NP\_037406.1

Catalog No. A301-640A

GeneID 27343

Lot No. A301-640A-3



APPLICATIONS	WB, IP
SPECIES REACTIVITY	Human
AMOUNT	100 µl
CONCENTRATION	200 µg/ml
STORAGE/SHELF LIFE	2 – 8° C / 1 year from date of receipt
PHYSICAL STATE	Liquid
BUFFER	Tris-buffered Saline containing 0.1% BSA and 0.09% Sodium Azide
ISOTYPE	IgG
ORIGIN	USA
PRODUCTION PROCEDURES	Antibody was affinity purified using an epitope specific to Pol Lambda immobilized on solid support.

The epitope recognized by A301-640A maps to a region between residue 150 and 200 of human polymerase (DNA directed), lambda using the numbering given in entry NP\_037406.1 (GeneID 27343).

Immunoglobulin concentration was determined by extinction coefficient: absorbance at 280 nm of 1.4 equals 1.0 mg of IgG.

**APPLICATIONS** Centrifuge tube to remove product from lid. Optimal working dilutions should be determined experimentally by the investigator. Prepare working dilution immediately before use.

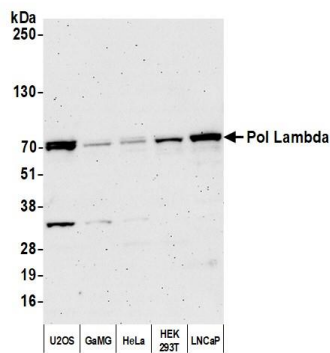
Western Blot 1:2,000 – 1:10,000

Immunoprecipitation 2 – 10 µg/mg lysate

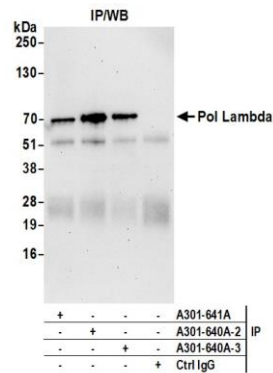
**ADDITIONAL INFO** <https://www.bethyl.com/product/A301-640A>

Use the link above to view SDS, a current list of citations, and other product specific information.  
IP-western blot protocol: [https://www.bethyl.com/content/protocol\\_IP\\_WB](https://www.bethyl.com/content/protocol_IP_WB)

This document certifies that this product has met all of the quality control standards defined by Bethyl Laboratories, Inc.  
Brian McWilliams, PhD Date: June 22, 2021



**Detection of human Pol Lambda by western blot.** *Samples:* Whole cell lysate (50 µg) from U2OS, GaMG, HeLa, HEK293T, and LNCaP cells prepared using NETN lysis buffer. *Antibody:* Affinity purified rabbit anti-Pol Lambda antibody (A301-640A lot 3) used for WB at 0.04 µg/ml. *Detection:* Chemiluminescence with an exposure time of 3 minutes.



**Detection of human Pol Lambda by western blot of immunoprecipitates.** *Samples:* Whole cell lysate (1.0 mg per IP reaction; 20% of IP loaded) from HEK293T cells prepared using NETN lysis buffer. *Antibodies:* Affinity purified rabbit anti-Pol Lambda antibody (A301-640A lot 3) used for IP at 6 µg per reaction. Pol Lambda was also immunoprecipitated by a previous lot of this antibody (A301-640A lot 2) and a second antibody against a different epitope of Pol Lambda (A301-641A). For blotting immunoprecipitated Pol Lambda, A301-640A was used at 0.04 µg/ml. *Detection:* Chemiluminescence with an exposure time of 30 seconds.