

# DOCK11 Antibody

Rabbit Polyclonal

Antigen Affinity Purified

Protein ID NP\_653259.3

Catalog No. A301-639A

GeneID 139818

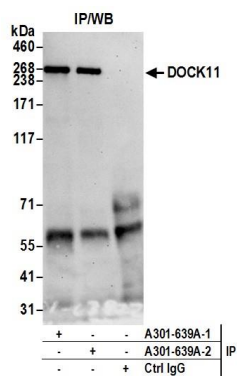
Lot No. A301-639A-2



APPLICATIONS	IP
SPECIES REACTIVITY	Human
AMOUNT	100 µl
CONCENTRATION	1000 µg/ml
STORAGE/SHELF LIFE	2 – 8° C / 1 year from date of receipt
PHYSICAL STATE	Liquid
BUFFER	Tris-citrate/phosphate buffer, pH 7 to 8 containing 0.09% Sodium Azide
ISOTYPE	IgG
ORIGIN	USA
PRODUCTION PROCEDURES	<p>Antibody was affinity purified using an epitope specific to DOCK11 immobilized on solid support.</p> <p>The epitope recognized by A301-639A maps to a region between residue 400 and 450 of human dedicator of cytokinesis 11 using the numbering given in entry NP_653259.3 (GeneID 139818).</p> <p>Immunoglobulin concentration was determined by extinction coefficient: absorbance at 280 nm of 1.4 equals 1.0 mg of IgG.</p>
APPLICATIONS	<p>Centrifuge tube to remove product from lid. Optimal working dilutions should be determined experimentally by the investigator. Prepare working dilution immediately before use.</p> <p>Western Blot                      Not recommended</p> <p>Immunoprecipitation        2 – 10 µg/mg lysate</p>
APPLICATION NOTES	Western blot of immunoprecipitates performed using Normal Pig Serum (Cat. No. S100-020), Goat anti-Rabbit Light Chain HRP Conjugate (Cat. No. A120-113P) and 4-8% SDS-PAGE (link to IP-western blot protocol in Additional Info section below).
ADDITIONAL INFO	<p><a href="https://www.bethyl.com/product/A301-639A">https://www.bethyl.com/product/A301-639A</a></p> <p>Use the link above to view SDS, a current list of citations, and other product specific information.</p> <p>IP-western blot protocol: <a href="https://www.bethyl.com/content/protocol_IP_WB">https://www.bethyl.com/content/protocol_IP_WB</a></p>

This document certifies that this product has met all of the quality control standards defined by Bethyl Laboratories, Inc.  
Eric McIntush, PhD | Chief Scientific Officer

Date: June 24, 2019



Detection of human DOCK11 by western blot of immunoprecipitates. Samples: Whole cell lysate (1.0 mg per IP reaction; 20% of IP loaded) from HeLa cells prepared using NETN lysis buffer. Antibodies: Affinity purified rabbit anti-DOCK11 antibody A301-639A (lot A301-639A-2) used for IP at 6 µg per reaction. DOCK11 was also immunoprecipitated by a previous lot of this antibody (lot A301-639A-1). For blotting immunoprecipitated DOCK11, A301-638A was used at 1 µg/ml. Detection: Chemiluminescence with an exposure time of 30 seconds.