

# KPNA3 Antibody

Rabbit Polyclonal

Antigen Affinity Purified

Protein ID NP\_002258.2

Catalog No. A301-626A

GeneID 3839

Lot No. A301-626A-1



|                              |   |
|------------------------------|---|
| <b>APPLICATIONS</b>          | WB, IP, IHC   |
| <b>SPECIES REACTIVITY</b>    | Human   |
| <b>AMOUNT</b>                | 100 µl  |
| <b>CONCENTRATION</b>         | 200 µg/ml   |
| <b>STORAGE/SHELF LIFE</b>    | 2 - 8° C / 1 year from date of receipt  |
| <b>PHYSICAL STATE</b>        | Liquid  |
| <b>BUFFER</b>                | Tris-buffered Saline containing 0.1% BSA and 0.09% Sodium Azide                                 |
| <b>ISOTYPE</b>               | IgG   |
| <b>ORIGIN</b>                | USA   |
| <b>PRODUCTION PROCEDURES</b> | Antibody was affinity purified using an epitope specific to KPNA3 immobilized on solid support. |

The epitope recognized by A301-626A maps to a region between residue 1 and 50 of human karyopherin alpha 3 using the numbering given in entry NP\_002258.2 (GeneID 3839).

Immunoglobulin concentration was determined by extinction coefficient: absorbance at 280 nm of 1.4 equals 1.0 mg of IgG.

**APPLICATIONS** Centrifuge tube to remove product from lid. Optimal working dilutions should be determined experimentally by the investigator. Prepare working dilution immediately before use.

Western Blot 1:2,000 – 1:10,000

Immunoprecipitation 2 – 5 µg/mg lysate

Immunohistochemistry 1:100 – 1:500. Epitope retrieval with citrate buffer pH 6.0 is recommended for FFPE tissue sections.

**APPLICATION NOTES** Western blot of immunoprecipitates performed using Normal Pig Serum (Cat. No. S100-020), Goat anti-Rabbit Light Chain HRP Conjugate (Cat. No. A120-113P) and 4-20% SDS-PAGE (link to IP-western blot protocol in Additional Info section below).

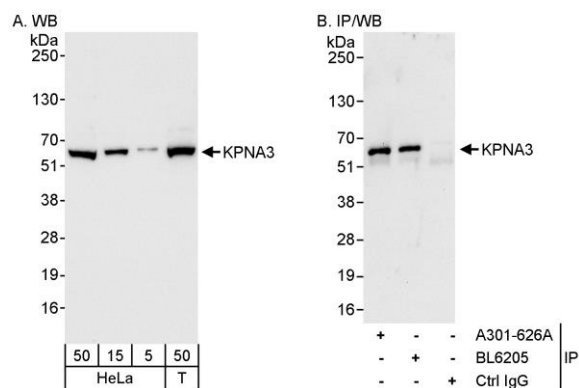
Western blot of lysates performed using standard western blot reagents and 4-20% SDS-PAGE.

**ADDITIONAL INFO** <https://www.bethyl.com/product/A301-626A>

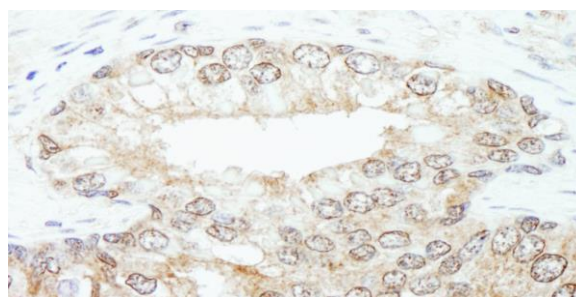
Use the link above to view SDS, a current list of citations, and other product specific information.

IP-western blot protocol: [https://www.bethyl.com/content/protocol\\_IP\\_WB](https://www.bethyl.com/content/protocol_IP_WB)

This document certifies that this product has met all of the quality control standards defined by Bethyl Laboratories, Inc.  
Eric McIntush, PhD | Chief Scientific Officer Date: June 21, 2019



**Detection of human KPNA3 by western blot and immunoprecipitation.** *Samples:* Whole cell lysate from HeLa (5, 15 and 50 µg for WB; 1 mg for IP, 20% of IP loaded) and HEK293T (T; 50 µg) cells. *Antibodies:* Affinity purified rabbit anti-KPNA3 antibody A301-626A used for WB at 0.4 µg/ml (A and B) and used for IP at 3 µg/mg lysate. KPNA3 was also immunoprecipitated by rabbit anti-KPNA3 antibody BL6205, which recognizes a downstream epitope. *Detection:* Chemiluminescence with exposure times of 10 seconds (A and B).



**Detection of human KPNA3 by immunohistochemistry.** *Sample:* FFPE section of human prostate carcinoma. *Antibody:* Affinity purified rabbit anti-KPNA3 (Cat. No. A301-626A Lot1) used at a dilution of 1:200 (1 µg/ml). *Detection:* DAB