

TDP1 Antibody

Rabbit Polyclonal

Antigen Affinity Purified

Protein ID NP_001008744.1

Catalog No. A301-618A

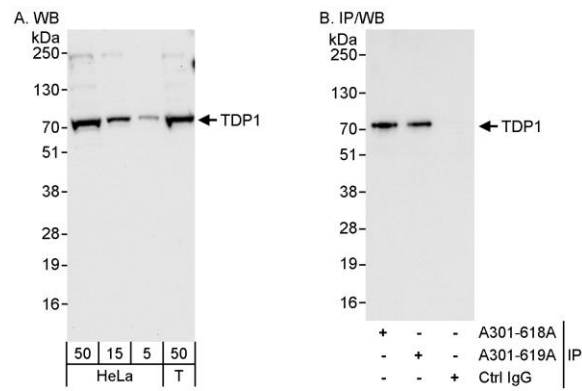
GeneID 55775

Lot No. A301-618A-1

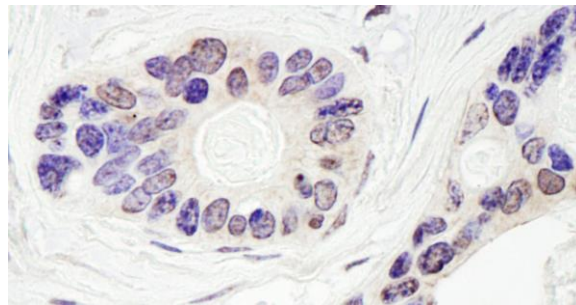


APPLICATIONS	WB, IP, IHC
SPECIES REACTIVITY	Human
AMOUNT	100 µl
CONCENTRATION	200 µg/ml
STORAGE/SHELF LIFE	2 - 8° C / 1 year from date of receipt
PHYSICAL STATE	Liquid
BUFFER	Tris-buffered Saline containing 0.1% BSA and 0.09% Sodium Azide
ISOTYPE	IgG
ORIGIN	USA
PRODUCTION PROCEDURES	<p>Antibody was affinity purified using an epitope specific to TDP1 immobilized on solid support.</p> <p>The epitope recognized by A301-618A maps to a region between residue 1 and 50 of human tyrosyl-DNA phosphodiesterase 1 using the numbering given in entry NP_001008744.1 (GeneID 55775).</p> <p>Immunoglobulin concentration was determined by extinction coefficient: absorbance at 280 nm of 1.4 equals 1.0 mg of IgG.</p>
APPLICATIONS	<p>Centrifuge tube to remove product from lid. Optimal working dilutions should be determined experimentally by the investigator. Prepare working dilution immediately before use.</p> <p>Western Blot 1:2,000 - 1:10,000</p> <p>Immunoprecipitation 2 - 5 µg/mg lysate</p> <p>Immunohistochemistry 1:100 - 1:500. Epitope retrieval with citrate buffer pH 6.0 is recommended for FFPE tissue sections.</p>
APPLICATION NOTES	<p>Western blot of immunoprecipitates performed using Normal Pig Serum (Cat. No. S100-020), Goat anti-Rabbit Light Chain HRP Conjugate (Cat. No. A120-113P) and 4-8% SDS-PAGE (link to IP-western blot protocol in Additional Info section below).</p> <p>Western blot of lysates performed using standard western blot reagents and 4-8% SDS-PAGE.</p>
IHC HUMAN CONTROLS	Breast Carcinoma, Ovarian Carcinoma, Prostate Carcinoma
ADDITIONAL INFO	<p>https://www.bethyl.com/product/A301-618A</p> <p>Use the link above to view SDS, a current list of citations, and other product specific information. IP-western blot protocol: https://www.bethyl.com/content/protocol_IP_WB</p>

This document certifies that this product has met all of the quality control standards defined by Bethyl Laboratories, Inc.
Eric McIntush, PhD | Chief Scientific Officer Date: June 21, 2019



Detection of human TDP1 by western blot and immunoprecipitation. *Samples:* Whole cell lysate from HeLa (5, 15 and 50 μ g for WB; 1 mg for IP, 20% of IP loaded) and HEK293T (T; 50 μ g) cells. *Antibodies:* Affinity purified rabbit anti-TDP1 antibody A301-618A used for WB at 0.04 μ g/ml (A) and 0.4 μ g/ml (B) and used for IP at 3 μ g/mg lysate. TDP1 was also immunoprecipitated by rabbit anti-TDP1 antibody A301-619A, which recognizes a downstream epitope. *Detection:* Chemiluminescence with exposure times of 10 seconds (A and B).



Detection of human TDP1 by immunohistochemistry. *Sample:* FFPE section of human ovarian carcinoma. *Antibody:* Affinity purified rabbit anti-TDP1 (Cat. No. A3001-618A Lot1) used at a dilution of 1:1,000 (0.2 μ g/ml). *Detection:* DAB