

# CENP-F/Mitosin Antibody

Rabbit Polyclonal

Antigen Affinity Purified

Protein ID AAA82889.1

Catalog No. A301-611A

GeneID 1063

Lot No. A301-611A-1



<b>APPLICATIONS</b>	IP, ICC-IF
<b>SPECIES REACTIVITY</b>	Human
<b>AMOUNT</b>	100 µl
<b>CONCENTRATION</b>	1000 µg/ml
<b>STORAGE/SHELF LIFE</b>	2 - 8° C / 1 year from date of receipt
<b>PHYSICAL STATE</b>	Liquid
<b>BUFFER</b>	Tris-citrate/phosphate buffer, pH 7 to 8 containing 0.09% Sodium Azide
<b>ISOTYPE</b>	IgG
<b>ORIGIN</b>	USA
<b>PRODUCTION PROCEDURES</b>	Antibody was affinity purified using an epitope specific to CENP-F/Mitosin immobilized on solid support.

The epitope recognized by A301-611A maps to a region between residue 1800 and 1850 of human centromere protein F (Mitosin) using the numbering given in entry AAA82889.1 (GeneID 1063).

Immunoglobulin concentration was determined by extinction coefficient: absorbance at 280 nm of 1.4 equals 1.0 mg of IgG.

**APPLICATIONS** Centrifuge tube to remove product from lid. Optimal working dilutions should be determined experimentally by the investigator. Prepare working dilution immediately before use.

Western Blot Not recommended. Use rabbit anti-CENP-F/Mitosin antibody A301-617A.

Immunoprecipitation 2 - 5 µg/mg lysate

Immunofluorescence (ICC) 1:500 - 1:2,000. Acetone fixation is recommended.

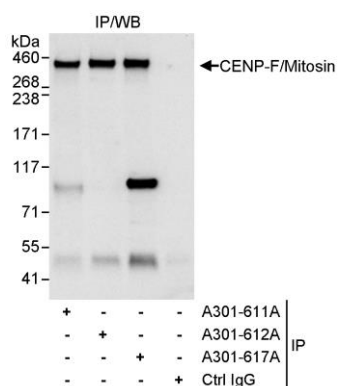
**APPLICATION NOTES** Western blot of immunoprecipitates performed using Normal Pig Serum (Cat. No. S100-020), Goat anti-Rabbit Light Chain HRP Conjugate (Cat. No. A120-113P) and 3-8% SDS-PAGE (link to IP-western blot protocol in Additional Info section below).

**IHC HUMAN CONTROLS** HeLa Cells

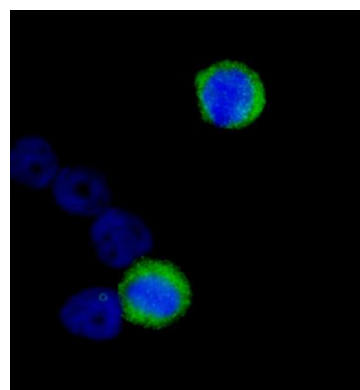
**ADDITIONAL INFO** <https://www.bethyl.com/product/A301-611A>

Use the link above to view SDS, a current list of citations, and other product specific information. IP-western blot protocol: [https://www.bethyl.com/content/protocol\\_IP\\_WB](https://www.bethyl.com/content/protocol_IP_WB)

This document certifies that this product has met all of the quality control standards defined by Bethyl Laboratories, Inc.  
Eric McIntush, PhD | Chief Scientific Officer Date: June 21, 2019



**Detection of human CENP-F/Mitotin by western blot of immunoprecipitates.** *Samples:* Whole cell lysate (1 mg for IP, 20% of IP loaded) from HeLa cells. *Antibodies:* Affinity purified rabbit anti-CENP-F/Mitotin antibody A301-611A used for IP at 3  $\mu$ g/mg lysate. CENP-F/Mitotin was also immunoprecipitated by rabbit anti-CENP-F/Mitotin antibodies A301-612A and A301-617A, which recognize downstream epitopes. For blotting immunoprecipitated CENP-F/Mitotin, A301-617A was used at 1  $\mu$ g/ml. *Detection:* Chemiluminescence with an exposure time of 3 seconds.



**Detection of human CENP-F/Mitotin by immunocytochemistry.** *Samples:* Acetone-fixed HeLa cells. *Antibody:* Affinity purified rabbit anti-CENP-F/Mitotin (Cat. No. A301-611A) used at a dilution of 1:1,000 (1  $\mu$ g/ml). *Detection:* Anti-rabbit IgG-FITC conjugated (Cat. No. A120-101F) used at a dilution of 1:100.