

SMARCD2/BAF60b Antibody

Rabbit Polyclonal

Antigen Affinity Purified	RefSeq ID	NP_003068.2
Catalog No. A301-596A	Uniprot ID	Q92925
Lot No. A301-596A-2	GeneID	6603

APPLICATIONS	WB
SPECIES REACTIVITY	Human
PRESUMED REACTIVITY	Based on 100% sequence identity, this antibody is predicted to react with Mouse, Rat and Bovine
AMOUNT	100 µl
CONCENTRATION	200 µg/ml
STORAGE/SHELF LIFE	2 – 8°C / 1 year from date of receipt
PHYSICAL STATE	Liquid
BUFFER	Tris-buffered Saline containing 0.1% BSA and 0.09% Sodium Azide
ISOTYPE	IgG
ORIGIN	USA
PRODUCTION PROCEDURES	Antibody was affinity purified using an epitope specific to SMARCD2/BAF60b immobilized on solid support.

The epitope recognized by A301-596A maps to a region between residue 425 and 475 of human SWI/SNF related, matrix associated, actin dependent regulator of chromatin, subfamily d, member 2 (mammalian chromatin remodeling complex BRG1-associated factor 60B) using the numbering given in entry NP_003068.2 (GeneID 6603).

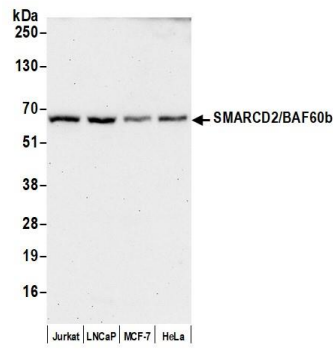
Immunoglobulin concentration was determined by extinction coefficient: absorbance at 280 nm of 1.4 equals 1.0 mg of IgG.

APPLICATIONS Centrifuge tube to remove product from lid. Optimal working dilutions should be determined experimentally by the investigator. Prepare working dilution immediately before use.

Western Blot 1:2,000 – 1:10,000

ADDITIONAL INFO <https://www.fortislife.com/p/A301-596A>
Use the link above to view SDS, a current list of citations, and other product specific information.

This document certifies that this product has met all of the quality control standards defined by Bethyl Laboratories, Inc.
Michael Spencer, PhD Date: March 6, 2023

**Detection of human SMARCD2/BAF60b by western blot.**

Samples: Whole cell lysate (50 µg) from Jurkat, LNCaP, MCF-7, and HeLa cells prepared using NETN lysis buffer.

Antibody: Affinity purified rabbit anti-SMARCD2/BAF60b antibody (A301-596A lot 2) used for WB at 0.1 µg/ml.

Detection: Chemiluminescence with an exposure time of 3 minutes.