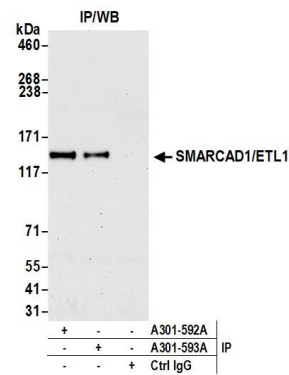


Detection of human SMARCAD1/ETL1 by western blot.
Samples: Whole cell lysate (50 µg) from MDA-MB-231, MCF-7, HEK293T, U2OS, and HeLa cells prepared using NETN lysis buffer. *Antibody:* Affinity purified rabbit anti-SMARCAD1/ETL1 antibody A301-593A (lot A301-593A-1) used for WB at 0.04 µg/ml. *Detection:* Chemiluminescence with an exposure time of 3 minutes.



Detection of human SMARCAD1/ETL1 by western blot of immunoprecipitates. *Samples:* Whole cell lysate (1.0 mg per IP reaction; 20% of IP loaded) from HEK293T cells prepared using NETN lysis buffer. *Antibodies:* Affinity purified rabbit anti-SMARCAD1/ETL1 antibody A301-593A (lot A301-593A-1) used for IP at 6 µg per reaction. SMARCAD1/ETL1 was also immunoprecipitated by rabbit anti-SMARCAD1/ETL1 antibody A301-592A. For blotting immunoprecipitated SMARCAD1/ETL1, A301-593A was used at 0.04 µg/ml. *Detection:* Chemiluminescence with an exposure time of 30 seconds.