

PBRM1 Antibody

Rabbit Polyclonal

Antigen Affinity Purified

Protein ID AAP34197.1

Catalog No. A301-591A

GeneID 55193

Lot No. A301-591A-5



APPLICATIONS	WB, IP, IHC
SPECIES REACTIVITY	Human, Mouse
AMOUNT	100 µl
CONCENTRATION	1000 µg/ml
STORAGE/SHELF LIFE	2 – 8° C / 1 year from date of receipt
PHYSICAL STATE	Liquid
BUFFER	Tris-citrate/phosphate buffer, pH 7 to 8 containing 0.09% Sodium Azide
ISOTYPE	IgG
ORIGIN	USA
PRODUCTION PROCEDURES	Antibody was affinity purified using an epitope specific to PB1 /BAF180 immobilized on solid support.

The epitope recognized by A301-591A maps to a region between residue 1639 and 1689 of human polybromo 1 (BRG1-associated factor 180) using the numbering given in entry AAP34197.1 (GeneID 55193).

Immunoglobulin concentration was determined by extinction coefficient: absorbance at 280 nm of 1.4 equals 1.0 mg of IgG.

APPLICATIONS Centrifuge tube to remove product from lid. Optimal working dilutions should be determined experimentally by the investigator. Prepare working dilution immediately before use.

Western Blot 1:2,000 – 1:10,000

Immunoprecipitation 2 – 10 µg/mg lysate

Immunohistochemistry 1:1000 to 1:5,000. Epitope retrieval with citrate buffer pH6.0 is recommended for FFPE tissue sections.

APPLICATION NOTES Western blot of immunoprecipitates performed using Normal Pig Serum (Cat. No. S100-020), Goat anti-Rabbit Light Chain HRP Conjugate (Cat. No. A120-113P) and 4-8% SDS-PAGE (link to IP-western blot protocol in Additional Info section below).

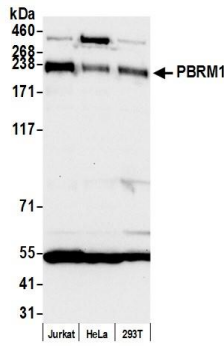
IHC HUMAN CONTROLS Western blot of lysates performed using standard western blot reagents and 4-8% SDS-PAGE. Breast Carcinoma, Ovarian Carcinoma, Prostate Carcinoma

IHC MOUSE CONTROLS Renal Cell Carcinoma, Teratoma

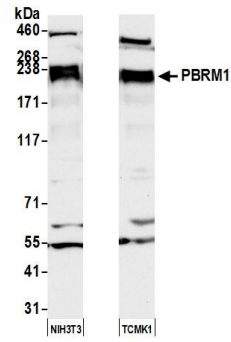
ADDITIONAL INFO <https://www.bethyl.com/product/A301-591A>

Use the link above to view SDS, a current list of citations, and other product specific information. IP-western blot protocol https://www.bethyl.com/content/protocol_IP_WB

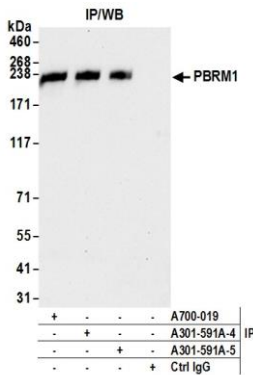
This document certifies that this product has met all of the quality control standards defined by Bethyl Laboratories, Inc.
Eric McIntush, PhD | Chief Scientific Officer Date: December 30, 2019



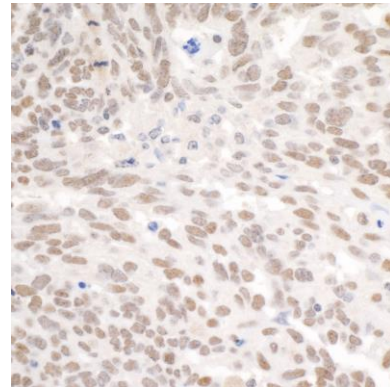
Detection of human PBRM1 by western blot. *Samples:* Whole cell lysate (50 µg) from Jurkat, HeLa, and HEK293T cells prepared using NETN lysis buffer. *Antibody:* Affinity purified rabbit anti-PBRM1 antibody A301-591A (lot A301-591A-5) used for WB at 0.1 µg/ml. *Detection:* Chemiluminescence with an exposure time of 10 seconds.



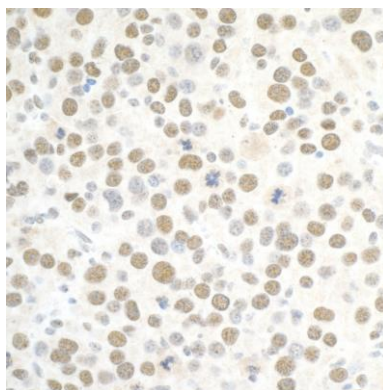
Detection of mouse PBRM1 by western blot. *Samples:* Whole cell lysate (50 µg) from NIH 3T3 and TCMK-1 prepared using NETN lysis buffer. *Antibody:* Affinity purified rabbit anti-PBRM1 antibody A301-591A (lot A301-591A-5) used for WB at 0.1 µg/ml. *Detection:* Chemiluminescence with an exposure time of 10 seconds.



Detection of human PBRM1 by western blot of immunoprecipitates. *Samples:* Whole cell lysate (1.0 mg per IP reaction; 20% of IP loaded) from Jurkat cells prepared using NETN lysis buffer. *Antibodies:* Affinity purified rabbit anti-PBRM1 antibody A301-591A (lot A301-591A-5) used for IP at 6 µg per reaction. PBRM1 was also immunoprecipitated by a previous lot of this antibody (lot A301-591A-4) and rabbit anti-PBRM1 recombinant monoclonal antibody A700-019. For blotting immunoprecipitated PBRM1, A700-019 was used at 0.1 µg/ml. *Detection:* Chemiluminescence with an exposure time of 10 seconds.



Detection of human PBRM1 by immunohistochemistry. *Sample:* FFPE section of human ovarian carcinoma. *Antibody:* Affinity purified rabbit anti-PBRM1 (Cat. No. A301-591A Lot 5) used at a dilution of 1:5,000 (0.2µg/ml). *Detection:* DAB.

**Detection of mouse PBRM1 by immunohistochemistry.**

Sample: FFPE section of mouse renal cell carcinoma.

Antibody: Affinity purified rabbit anti-PBRM1 (Cat. No.

A301-591A Lot 5) used at a dilution of 1:5,000 (0.2µg/ml).

Detection: DAB.