

PBRM1 Antibody

Rabbit Polyclonal

Antigen Affinity Purified

Protein ID AAP34197.1

Catalog No. A301-590A

GeneID 55193

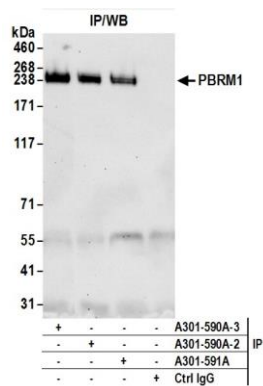
Lot No. A301-590A-3



APPLICATIONS	IP
SPECIES REACTIVITY	Human
PRESUMED REACTIVITY	Based on 100% sequence identity, this antibody is predicted to react with Mouse
AMOUNT	100 µl
CONCENTRATION	1000 µg/ml
STORAGE/SHELF LIFE	2 – 8° C / 1 year from date of receipt
PHYSICAL STATE	Liquid
BUFFER	Tris-citrate/phosphate buffer, pH 7 to 8 containing 0.09% Sodium Azide
ISOTYPE	IgG
ORIGIN	USA
PRODUCTION PROCEDURES	<p>Antibody was affinity purified using an epitope specific to PB1 /BAF180 immobilized on solid support.</p> <p>The epitope recognized by A301-590A maps to a region between residue 1 and 50 of human polybromo 1 (BRG1-associated factor 180) using the numbering given in entry AAP34197.1 (GeneID 55193).</p> <p>Immunoglobulin concentration was determined by extinction coefficient: absorbance at 280 nm of 1.4 equals 1.0 mg of IgG.</p>
APPLICATIONS	<p>Centrifuge tube to remove product from lid. Optimal working dilutions should be determined experimentally by the investigator. Prepare working dilution immediately before use.</p> <p>Western Blot Not recommended. Use rabbit anti-PBRM1 antibody A301-591A.</p> <p>Immunoprecipitation 2 – 10 µg/mg lysate</p>
APPLICATION NOTES	Western blot of immunoprecipitates performed using Normal Pig Serum (Cat. No. S100-020), Goat anti-Rabbit Light Chain HRP Conjugate (Cat. No. A120-113P) and 4-8% SDS-PAGE (link to IP-western blot protocol in Additional Info section below).
ADDITIONAL INFO	<p>https://www.bethyl.com/product/A301-590A</p> <p>Use the link above to view SDS, a current list of citations, and other product specific information.</p> <p>IP-western blot protocol: https://www.bethyl.com/content/protocol_IP_WB</p>

This document certifies that this product has met all of the quality control standards defined by Bethyl Laboratories, Inc.
Eric McIntush, PhD | Chief Scientific Officer

Date: June 21, 2019



Detection of human PBRM1 by western blot of immunoprecipitates. *Samples:* Whole cell lysate (1.0 mg per IP reaction; 20% of IP loaded) from HeLa cells prepared using NETN lysis buffer. *Antibodies:* Affinity purified rabbit anti-PBRM1 antibody A301-590A (lot A301-590A-3) used for IP at 6 µg per reaction. PBRM1 was also immunoprecipitated by a previous lot of this antibody (lot A301-590A-2) and rabbit anti-PBRM1 antibody A301-591A. For blotting immunoprecipitated PBRM1, Rabbit anti-PBRM1 recombinant monoclonal antibody A700-019 was used at 1:1000. *Detection:* Chemiluminescence with an exposure time of 30 seconds.