

CPSF100 Antibody

Rabbit Polyclonal

Antigen Affinity Purified

Protein ID NP_059133.1

Catalog No. A301-581A

GeneID 53981

Lot No. A301-581A-1



APPLICATIONS	WB, IP, IHC
SPECIES REACTIVITY	Human, Mouse
PRESUMED REACTIVITY	Based on 100% sequence identity, this antibody is predicted to react with Bovine
AMOUNT	100 µl
CONCENTRATION	200 µg/ml
STORAGE/SHELF LIFE	2 - 8° C / 1 year from date of receipt
PHYSICAL STATE	Liquid
BUFFER	Tris-buffered Saline containing 0.1% BSA and 0.09% Sodium Azide
ISOTYPE	IgG
ORIGIN	USA
PRODUCTION PROCEDURES	Antibody was affinity purified using an epitope specific to CPSF100 immobilized on solid support. The epitope recognized by A301-581A maps to a region between residue 450 and 500 of human cleavage and polyadenylation specific factor 2, 100kDa using the numbering given in entry NP_059133.1 (GeneID 53981).

Immunoglobulin concentration was determined by extinction coefficient: absorbance at 280 nm of 1.4 equals 1.0 mg of IgG.

APPLICATIONS Centrifuge tube to remove product from lid. Optimal working dilutions should be determined experimentally by the investigator. Prepare working dilution immediately before use.

Western Blot	1:2,000 - 1:10,000
Immunoprecipitation	2 - 5 µg/mg lysate
Immunohistochemistry	1:100 - 1:500. Epitope retrieval with citrate buffer pH 6.0 is recommended for FFPE tissue sections.

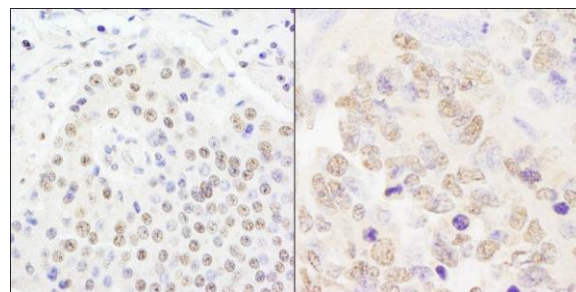
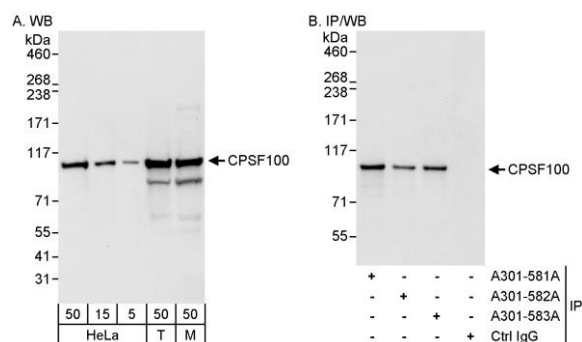
APPLICATION NOTES Western blot of immunoprecipitates performed using Normal Pig Serum (Cat. No. S100-020), Goat anti-Rabbit Light Chain HRP Conjugate (Cat. No. A120-113P) and 4-8% SDS-PAGE (link to IP-western blot protocol in Additional Info section below).

IHC HUMAN CONTROLS Western blot of lysates performed using standard western blot reagents and 4-8% SDS-PAGE. Breast Carcinoma, Linitis Plastica Stomach Cancer, Ovarian Carcinoma, Pancreatic Islet Cell Tumor

IHC MOUSE CONTROLS Renal Cell Carcinoma, Teratoma

ADDITIONAL INFO <https://www.bethyl.com/product/A301-581A>
Use the link above to view SDS, a current list of citations, and other product specific information.
IP-western blot protocol: https://www.bethyl.com/content/protocol_IP_WB

This document certifies that this product has met all of the quality control standards defined by Bethyl Laboratories, Inc.
Eric McIntush, PhD | Chief Scientific Officer Date: June 21, 2019



Detection of human and mouse CPSF100 by western blot (h&m) and immunoprecipitation (h). *Samples:* Whole cell lysate from HeLa (5, 15 and 50 µg for WB; 1 mg for IP, 20% of IP loaded), HEK293T (T; 50 µg) and mouse NIH 3T3 (M; 50 µg) cells. *Antibodies:* Affinity purified rabbit anti-CPSF100 antibody A301-581A used for WB at 0.04 µg/ml (A) and 1 µg/ml (B) and used for IP at 3 µg/mg lysate. CPSF100 was also immunoprecipitated by rabbit anti-CPSF100 antibodies A301-582A and A301-583A, which recognize downstream epitopes. *Detection:* Chemiluminescence with exposure times of 30 seconds (A) and 3 seconds (B).

Detection of human and mouse CPSF100 by immunohistochemistry. *Sample:* FFPE section of human pancreatic islet cell tumor (left) and mouse teratoma (right). *Antibody:* Affinity purified rabbit anti-CPSF100 (Cat. No. A301-581A) used at a dilution of 1:200 (1 µg/ml). *Detection:* DAB