

CPSF160 Antibody

Rabbit Polyclonal

Antigen Affinity Purified

Protein ID NP_037423.1

Catalog No. A301-580A

GeneID 29894

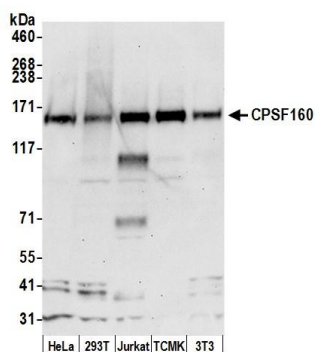
Lot No. A301-580A-2



APPLICATIONS	WB, IP, IHC
SPECIES REACTIVITY	Human, Mouse
PRESUMED REACTIVITY	Based on 100% sequence identity, this antibody is predicted to react with Bovine
AMOUNT	100 µl
CONCENTRATION	200 µg/ml
STORAGE/SHELF LIFE	2 – 8° C / 1 year from date of receipt
PHYSICAL STATE	Liquid
BUFFER	Tris-buffered Saline containing 0.1% BSA and 0.09% Sodium Azide
ISOTYPE	IgG
ORIGIN	USA
PRODUCTION PROCEDURES	<p>Antibody was affinity purified using an epitope specific to CPSF160 immobilized on solid support.</p> <p>The epitope recognized by A301-580A maps to a region between residue 1392 and 1442 of human cleavage and polyadenylation specific factor 1, 160kD subunit using the numbering given in entry NP_037423.1 (GeneID 29894).</p> <p>Immunoglobulin concentration was determined by extinction coefficient: absorbance at 280 nm of 1.4 equals 1.0 mg of IgG.</p>
APPLICATIONS	<p>Centrifuge tube to remove product from lid. Optimal working dilutions should be determined experimentally by the investigator. Prepare working dilution immediately before use.</p> <p>Western Blot 1:2,000 – 1:10,000</p> <p>Immunoprecipitation 2 – 10 µg/mg lysate</p> <p>Immunohistochemistry 1:100 to 1:500. Epitope retrieval with citrate buffer pH6.0 is recommended for FFPE tissue sections.</p>
APPLICATION NOTES	Western blot of immunoprecipitates performed using Normal Pig Serum (Cat. No. S100-020), Goat anti-Rabbit Light Chain HRP Conjugate (Cat. No. A120-113P) and 4-8% SDS-PAGE (link to IP-western blot protocol in Additional Info section below).
IHC HUMAN CONTROLS	Western blot of lysates performed using standard western blot reagents and 4-8% SDS-PAGE. Anaplastic Thyroid Carcinoma, Bladder Cell Carcinoma, Breast Carcinoma, Colon Carcinoma, Ewing Sarcoma, Linitis Plastica Stomach Cancer, Ovarian Carcinoma, Prostate Carcinoma, Skin Basal Cell Carcinoma, Stomach Adenocarcinoma, Testicular Seminoma
IHC MOUSE CONTROLS	Colon Carcinoma CT26, Renal Cell Carcinoma, Teratoma
ADDITIONAL INFO	<p>https://www.bethyl.com/product/A301-580A</p> <p>Use the link above to view SDS, a current list of citations, and other product specific information.</p> <p>IP-western blot protocol: https://www.bethyl.com/content/protocol_IP_WB</p>

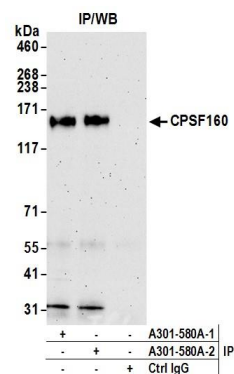
This document certifies that this product has met all of the quality control standards defined by Bethyl Laboratories, Inc.
Eric McIntush, PhD | Chief Scientific Officer

Date: June 21, 2019



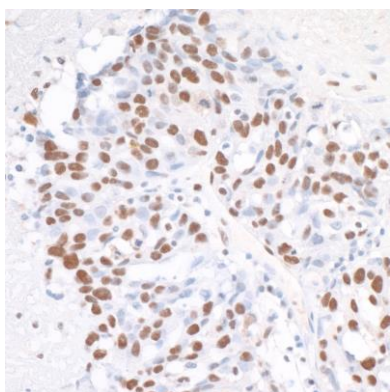
Detection of human and mouse CPSF160 by western blot.

Samples: Whole cell lysate (50 µg) from HeLa, HEK293T, Jurkat, mouse TCMK-1, and mouse NIH 3T3 cells prepared using NETN lysis buffer. **Antibody:** Affinity purified rabbit anti-CPSF160 antibody A301-580A (lot A301-580A-2) used for WB at 0.1 µg/ml. **Detection:** Chemiluminescence with an exposure time of 30 seconds.



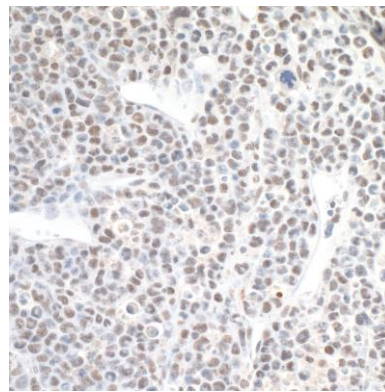
Detection of human CPSF160 by western blot of immunoprecipitates.

Samples: Whole cell lysate (1.0 mg per IP reaction; 20% of IP loaded) from HeLa cells prepared using NETN lysis buffer. **Antibodies:** Affinity purified rabbit anti-CPSF160 antibody A301-580A (lot A301-580A-2) used for IP at 6 µg per reaction. CPSF160 was also immunoprecipitated by a previous lot of this antibody (lot A301-580A-1). For blotting immunoprecipitated CPSF160, A301-580A was used at 1 µg/ml. **Detection:** Chemiluminescence with an exposure time of 3 minutes.



Detection of human CPSF160 by immunohistochemistry.

Sample: FFPE section of human ovarian carcinoma. **Antibody:** Affinity purified rabbit anti-CPSF160 (Cat. No. A301-580A lot 2) used at a dilution of 1:200 (1 µg/ml). **Detection:** DAB



Detection of mouse CPSF160 by immunohistochemistry.

Sample: FFPE section of mouse renal cell carcinoma. **Antibody:** Affinity purified rabbit anti-CPSF160 (Cat. No. A301-580A lot 2) used at a dilution of 1:200 (1 µg/ml). **Detection:** DAB